



SunTM ONE
Open Net Environment

Portal Server

Per-Olof Litby
Sun ONE Business Development
North Europe Region

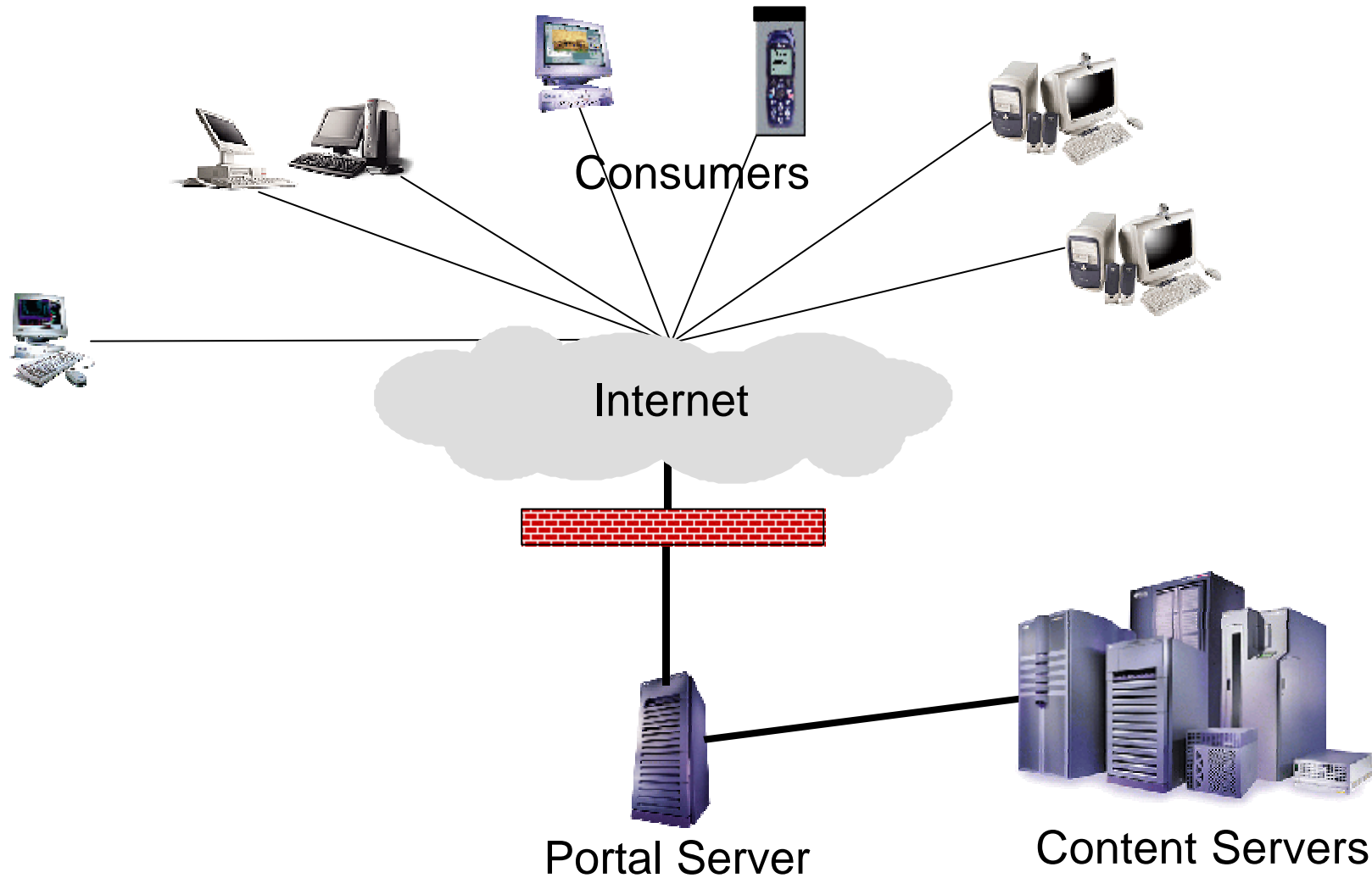




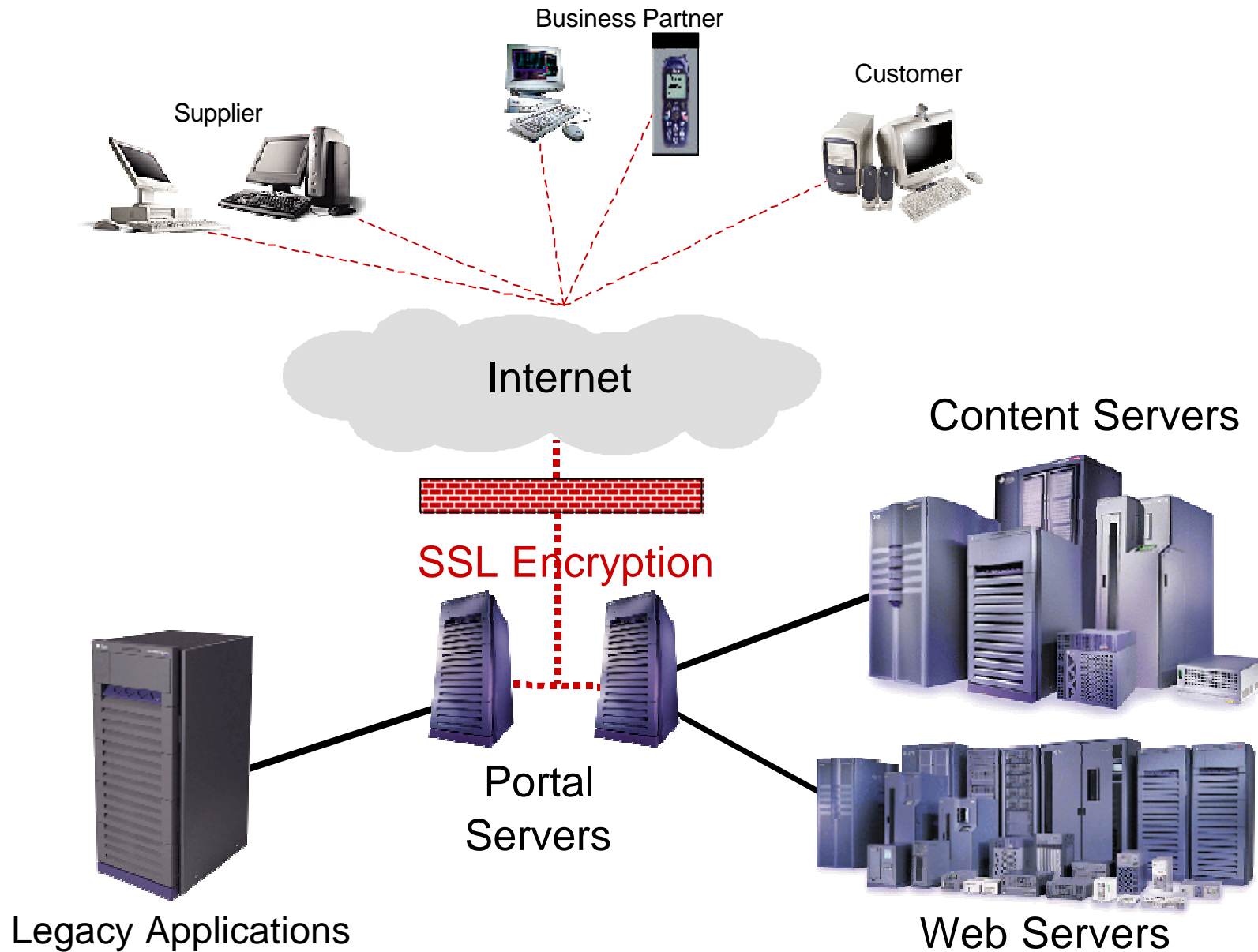
Today's Portal Software Market

- ? The Portal software market to date has been characterized by *fragmented, narrowly defined* portal offerings from software vendors:
 - “ *Mega Portal*”
 - “ *Enterprise Information Portal*”
 - “ *Consumer Portal*”
 - “ *Business Analytics / Intelligence Portal*”
 - “ *Knowledge Management Portal*”
 - “ *(Industry Vertical) Portal*”
- ? The Sun ONE Portal Server offers a complete *infrastructure* solution to Portal computing, a platform for building & deploying all types of Portals: B2B, B2E, B2C

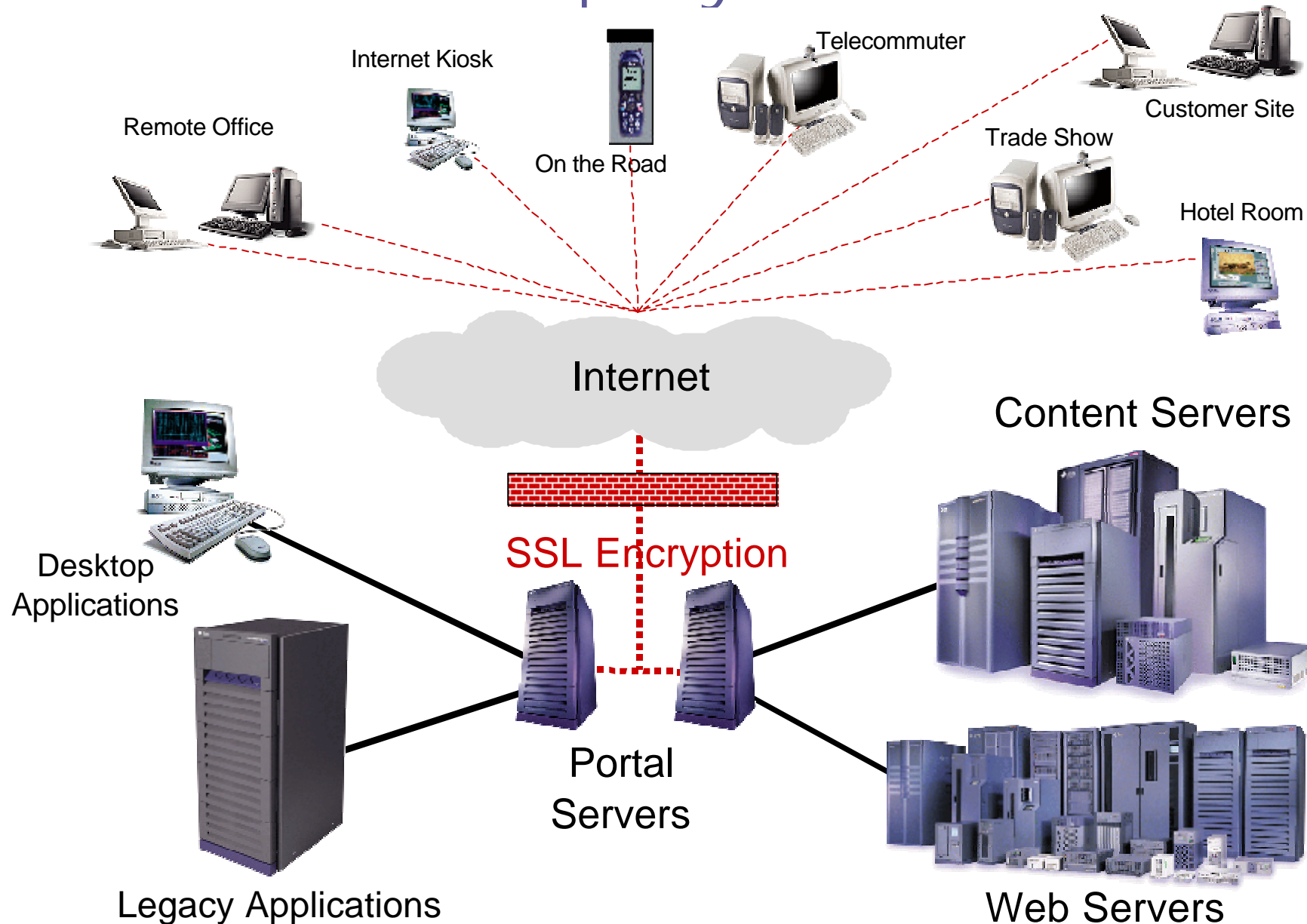
Business to Consumer Portal



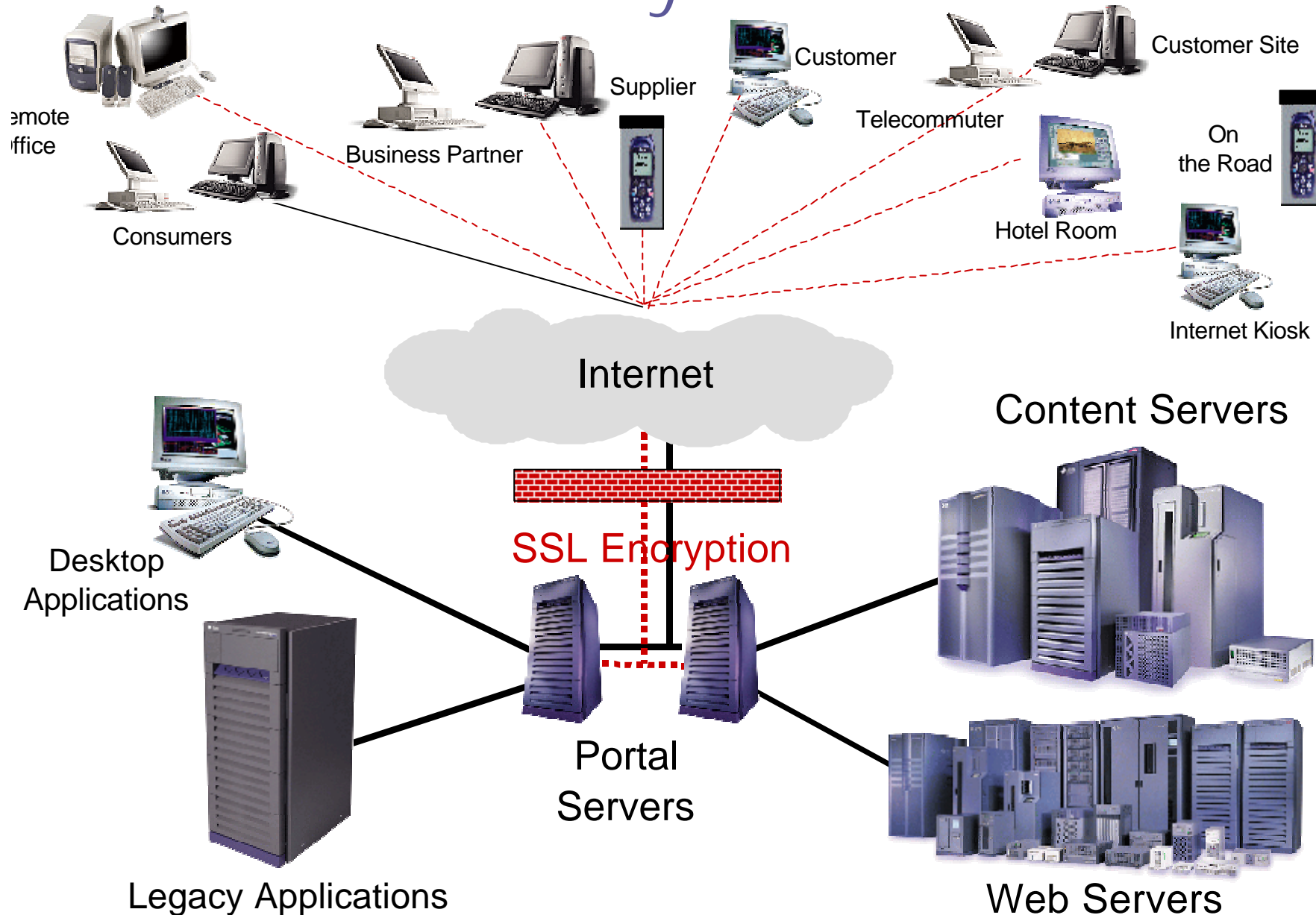
Business to Business Portal



Business to Employee Portal



Business to Everyone Portal



Portal Solution Requirements

- ? An open, flexible portal platform with value-added services to build and deploy personalized portals
- ? Embrace current corporate assets and technology investments
- ? Ability to introduce content and services to your community through partnerships and portal content syndicators
- ? Open Internet access, secure Intranet access, anytime/anywhere/any-device access
- ? Community, Communication, and Collaboration

Sun ONE* Portal Server

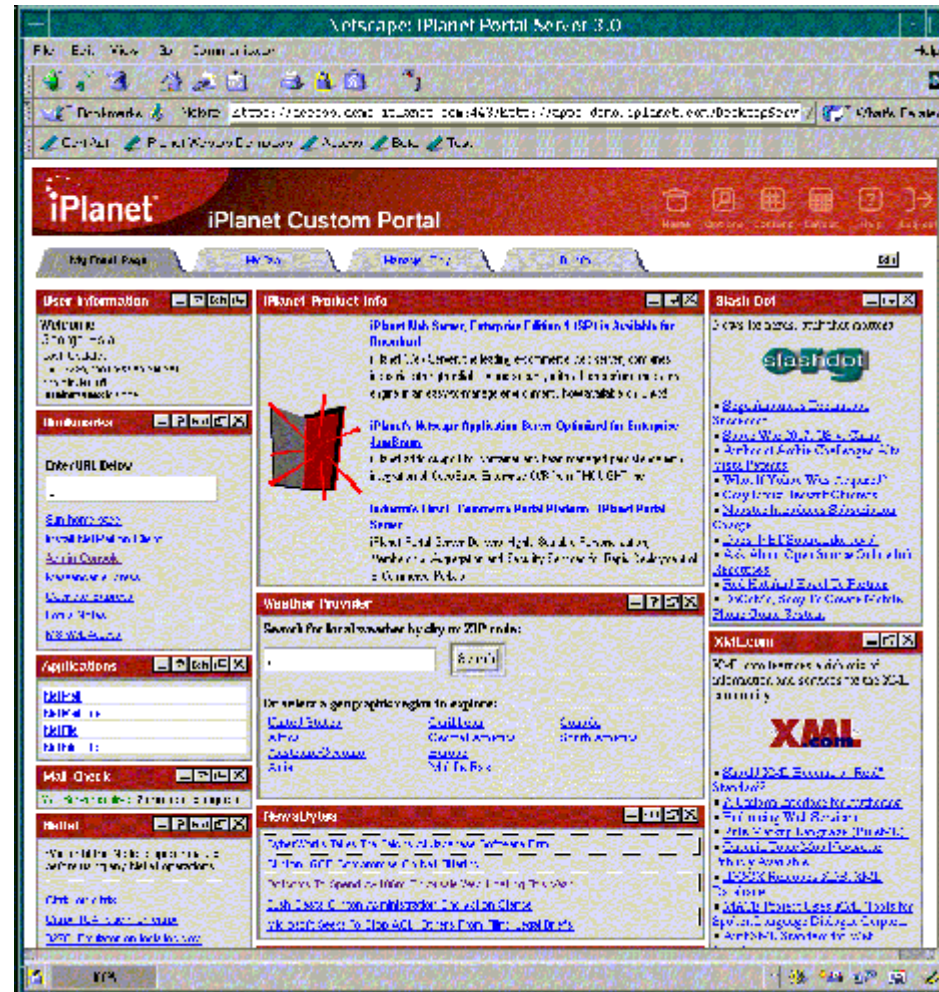


The Sun ONE Portal Server is a highly scalable Platform that provides:

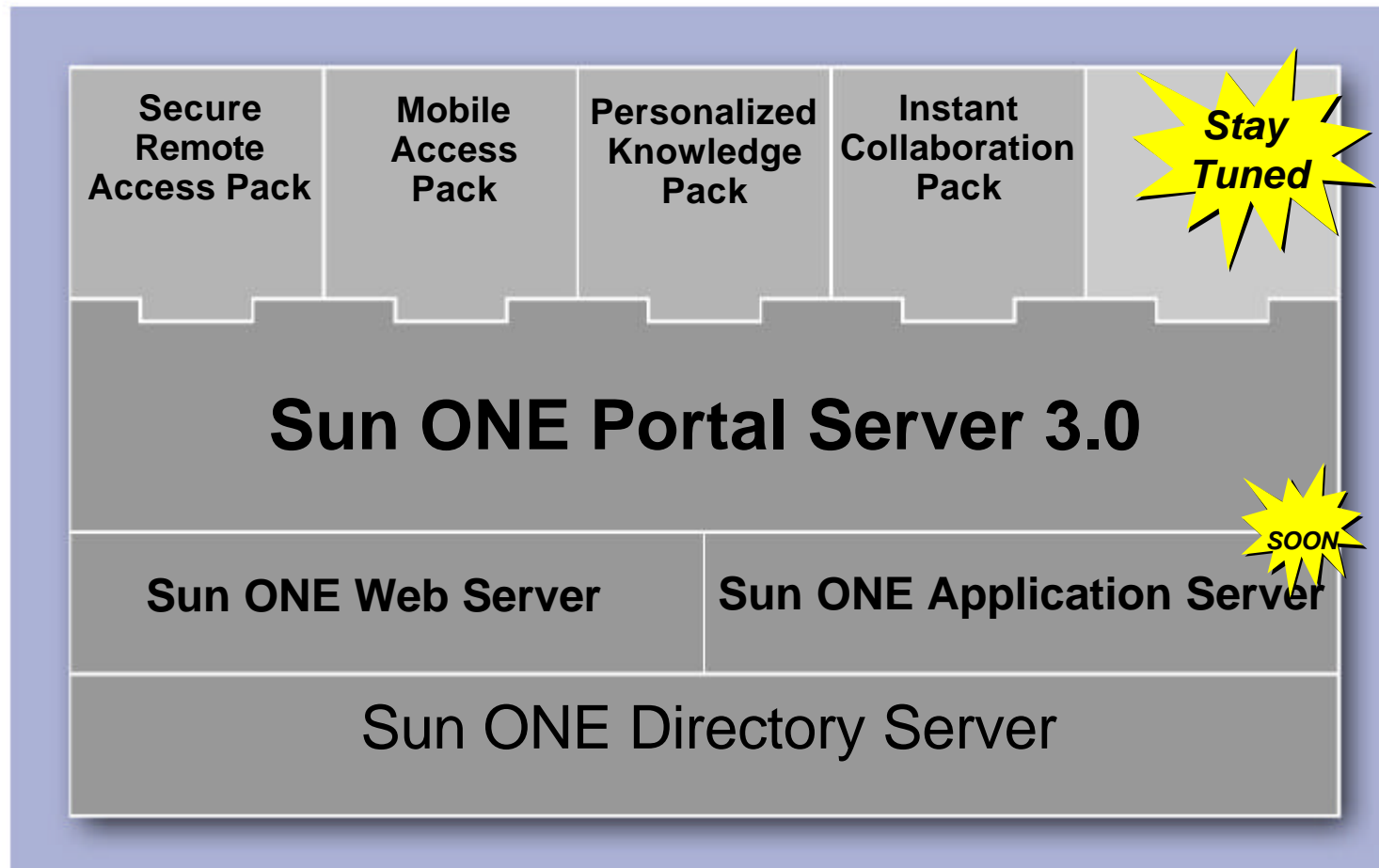
- Aggregation & Presentation
- Membership Management
- Personalization & Customization
- Application Integration Services
- Scalability & Performance
- Secure Services
- Mobile Device Support
- Knowledge Management
- Communication & Collaboration

for a rapid development and deployment of B2C, B2B, or B2E portal sites

(*) née iPlanet Portal Server



Industry's Broadest Portal Offering

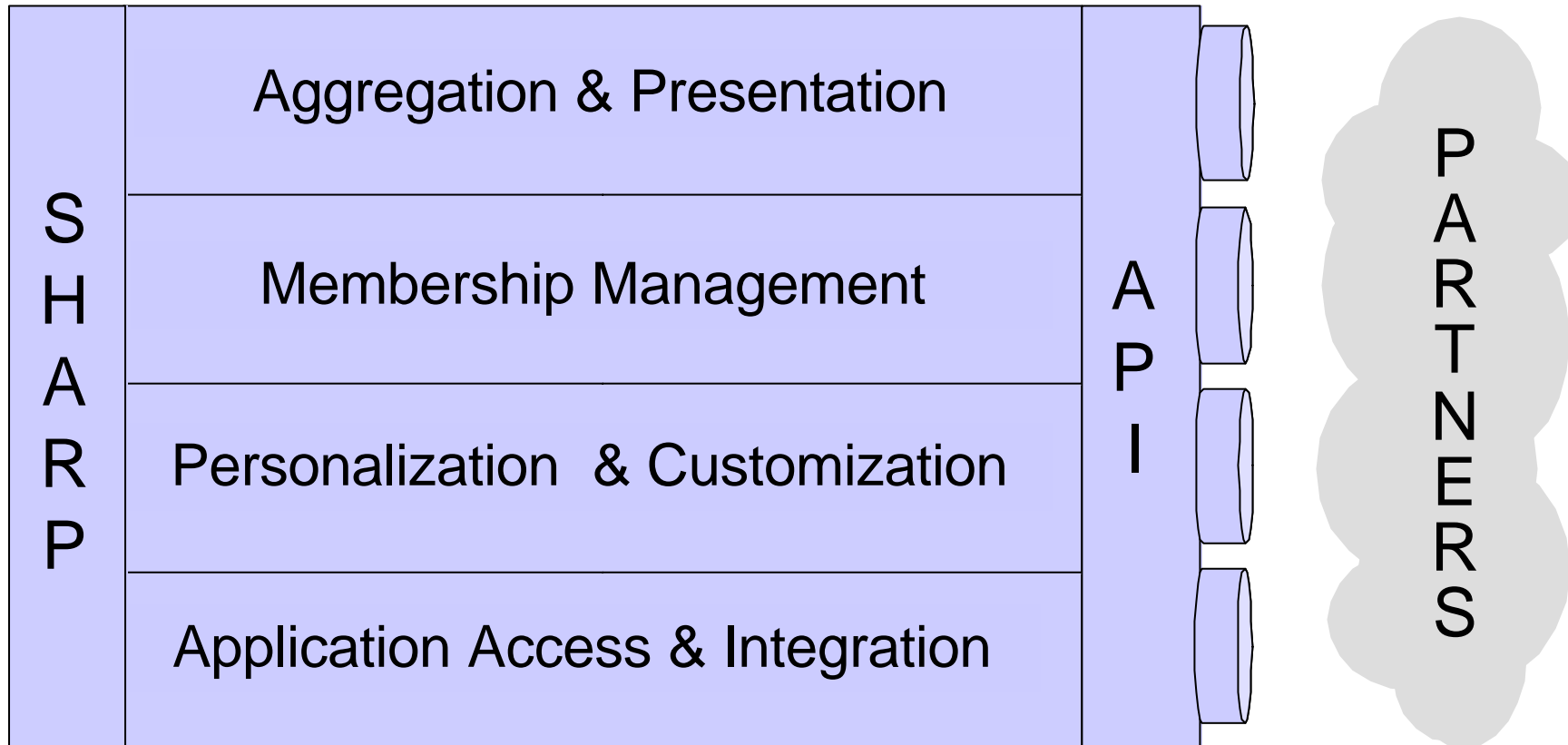


What differentiates Sun ONE Portal Server?

- ? Key Services
 - Aggregation & Presentation, Membership Management, Personalization & Customization, Application Access & Integration
- ? APIs for development
 - Policy, Profile, Authentication, Channel Content, Single Sign-On, Session, Logging
- ? Partners
 - Application Software Vendors, Services Vendors, Content Aggregators, Implementation and Deployment Partners
- ? SHARP
 - Scalability, Highly Availability, Reliability, Performance
- ? Portal “Packs”
 - Secure Services, Mobile Device Support, Knowledge Management, Communication & Collaboration

A Robust Portal Platform

Key Services

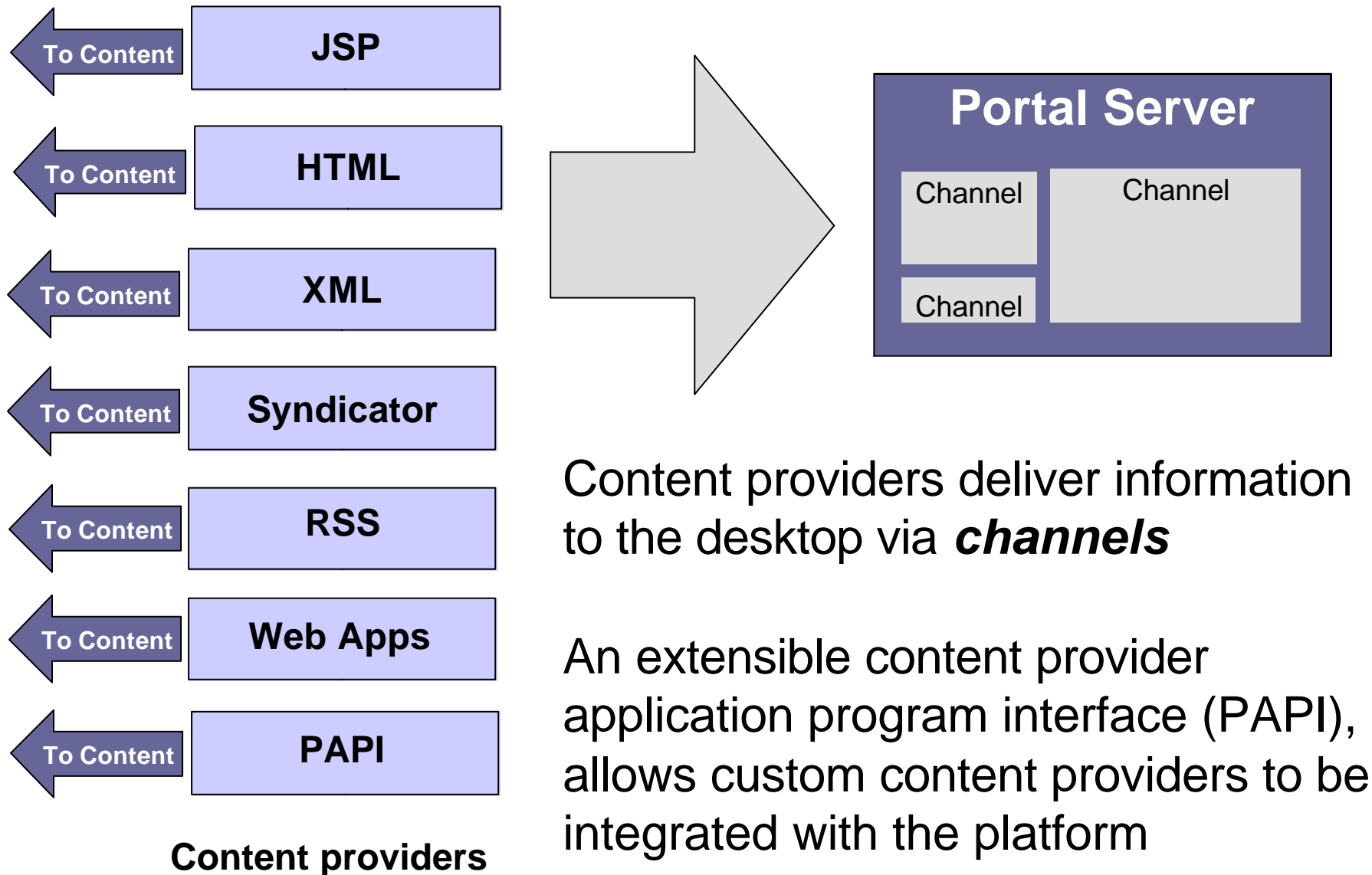


Key Services



- ? Aggregation & Presentation Services
 - Channels
 - Browser-based interface
 - Portal Creation and Layout
- ? Membership Management Services
 - Community Building
 - Profile Driven Hierarchy
 - Policy-based Access to Information
- ? Personalization & Customization Services
 - Enterprise-wide Customization
 - Group level Customization
 - User level Personalization
- ? Application Access & Integration Services
 - HTML/web-based: mail client, file access
 - Channels: Syndicated, HTML, XML, JSP
 - Applications: Windows, UNIX™, Linux, mainframe

Aggregation and Presentation



Aggregation and Presentation

HTML content
obtained from an
Internal web server
(URL-Scraper)

Links to start
Applications
(Netfile &
Netmail
are provided)

Direct access to any Intranet TCP/IP
applications (many NT applications,
Mainframe apps...). Remote display
other apps via Citrix.



Online Summary
of URLs - Rich Site
Summary

Syndicated
content coming
from a content
syndicator such
as iSyndicate

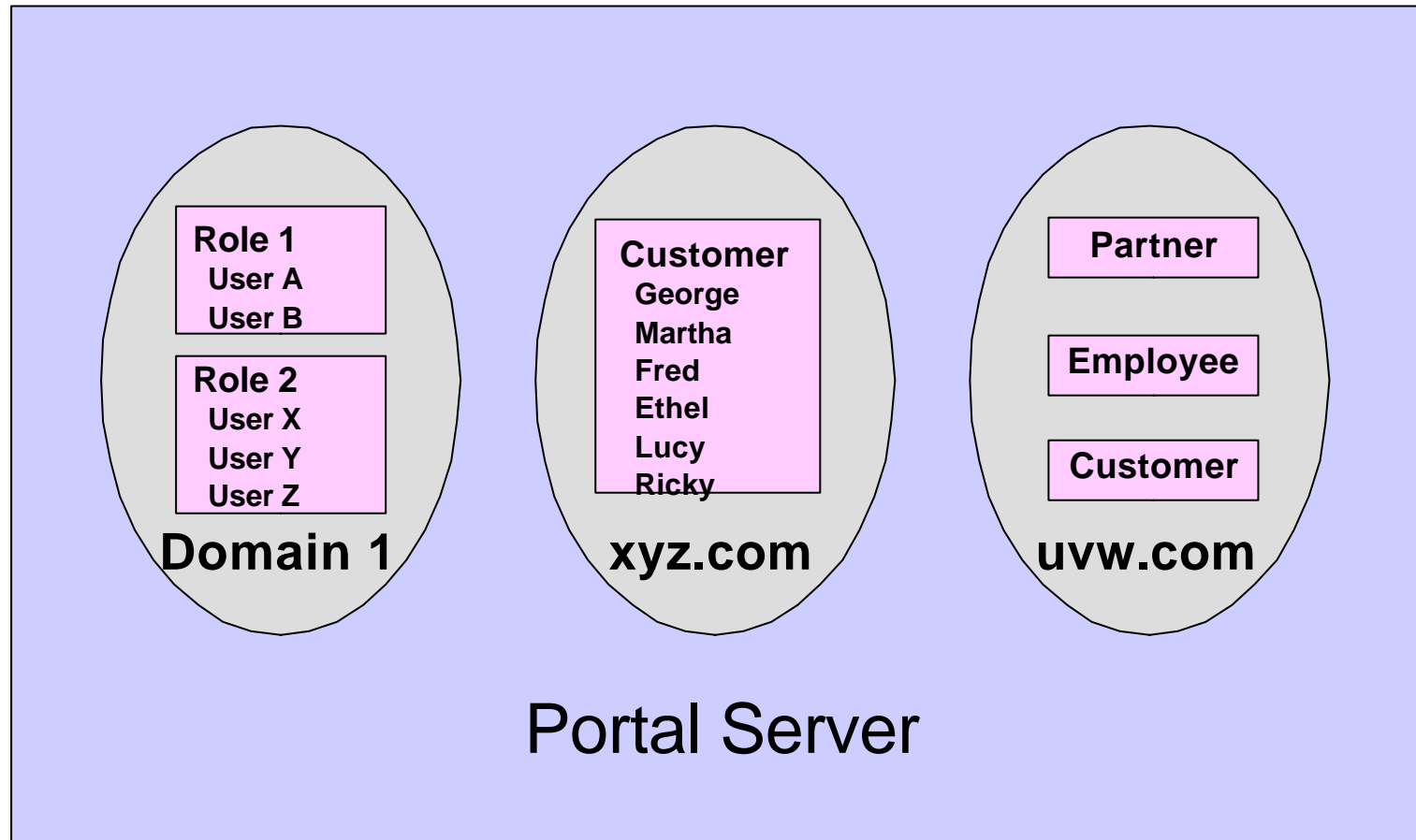
Access to Intranet
web applications
(URL-Scraper)

Java Server Page (JSP)
based web content

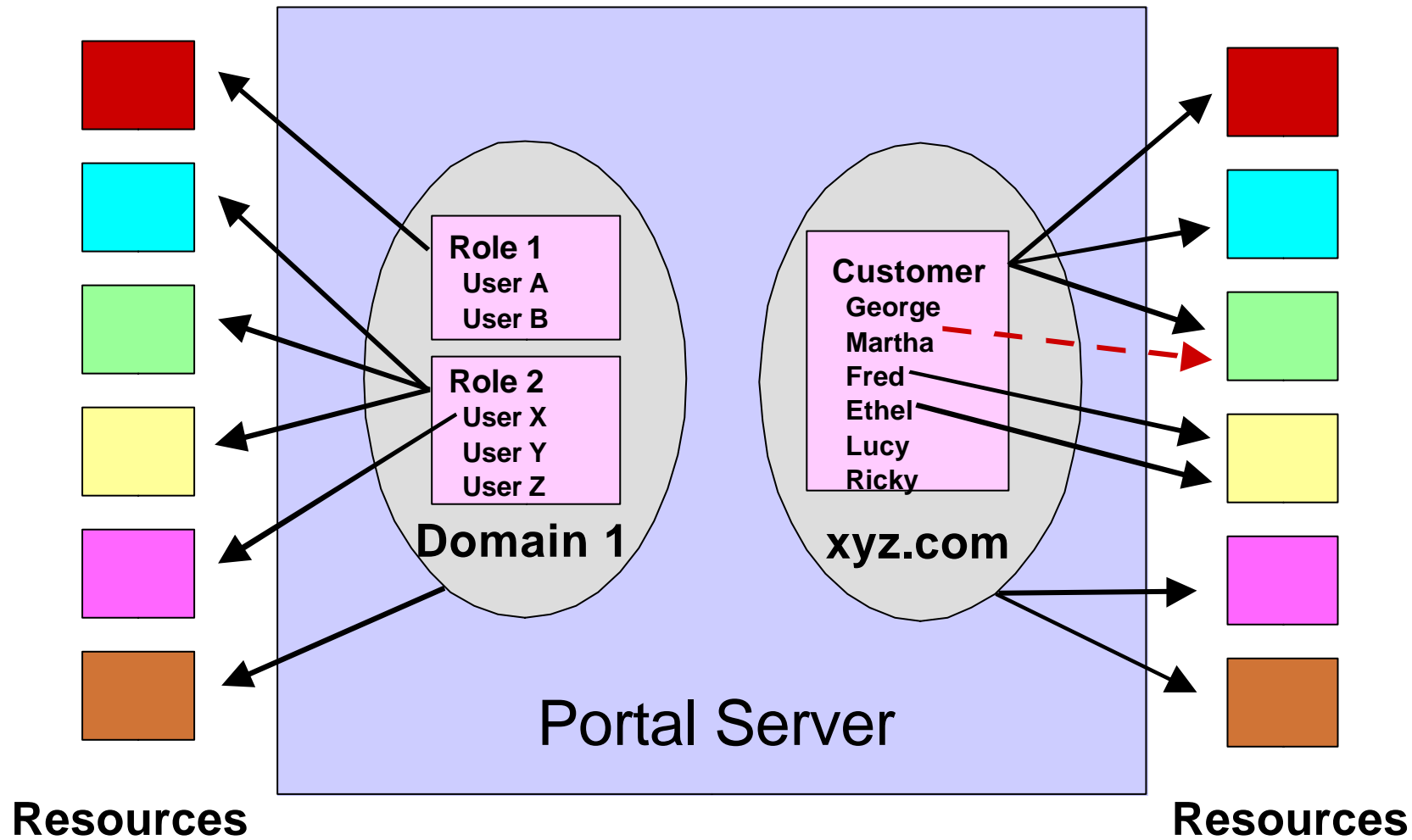
Membership Management



Domains, Roles, and User



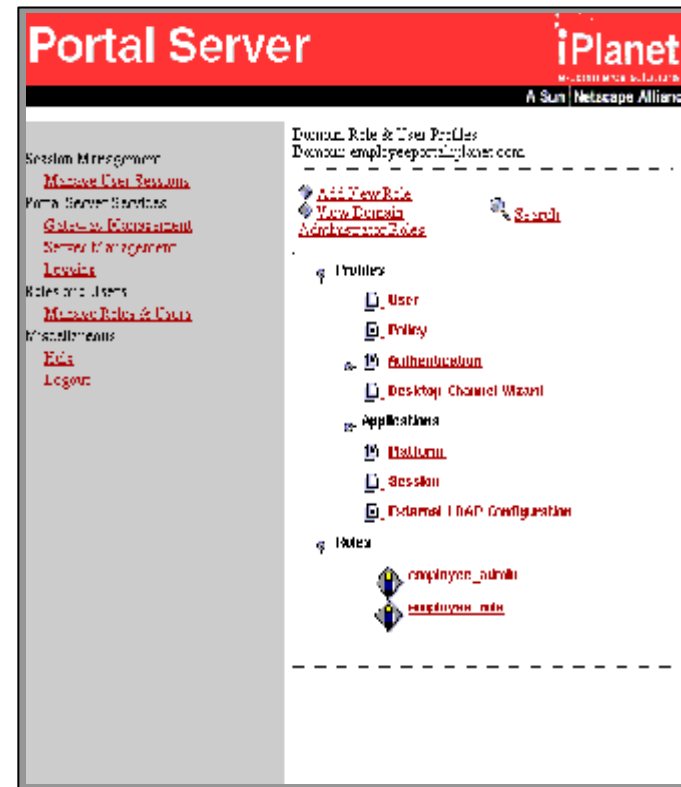
Membership Management Policy



Administration Console



- ? Domain content and presentation configuration
- ? Domain, role, and user membership management policy
- ? Delegated admin per domain
- ? Authentication methods
- ? HTML-based GUI
- ? Command-line utilities for scripting/automation
- ? Local file or JDBC logging



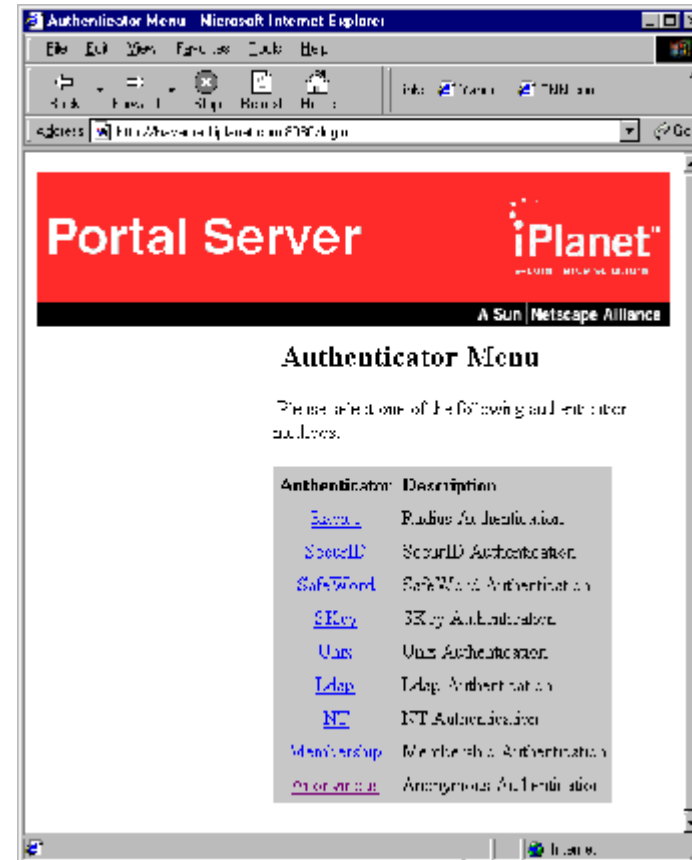
Authentication



? Real-time authentication services

- LDAP
- RADIUS
- UNIX
- Microsoft Windows/NT domain
- X509v3 Digital Certificates
- S/Key one time password
- Digital Token Cards - Secure Computing
SafeWord digital token & Security Dynamics
SecureID digital token
- Membership
- Anonymous

? API to other customer authentication mechanisms



Customization & Personalization

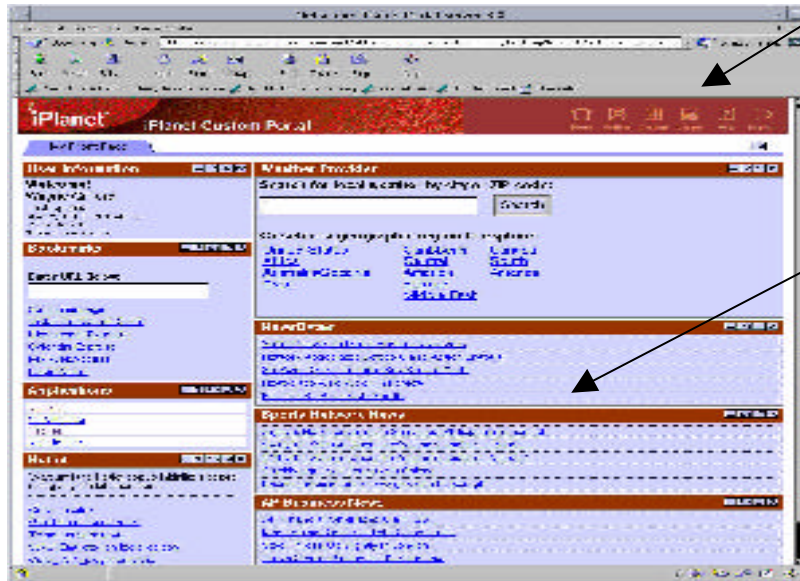


The Sun ONE Portal Server offers the ability to create custom portals. Users may personalize the content to the extent determined by the administrator.

Options: Modify Number of columns, rows, etc.

Content: Select channels that will be displayed

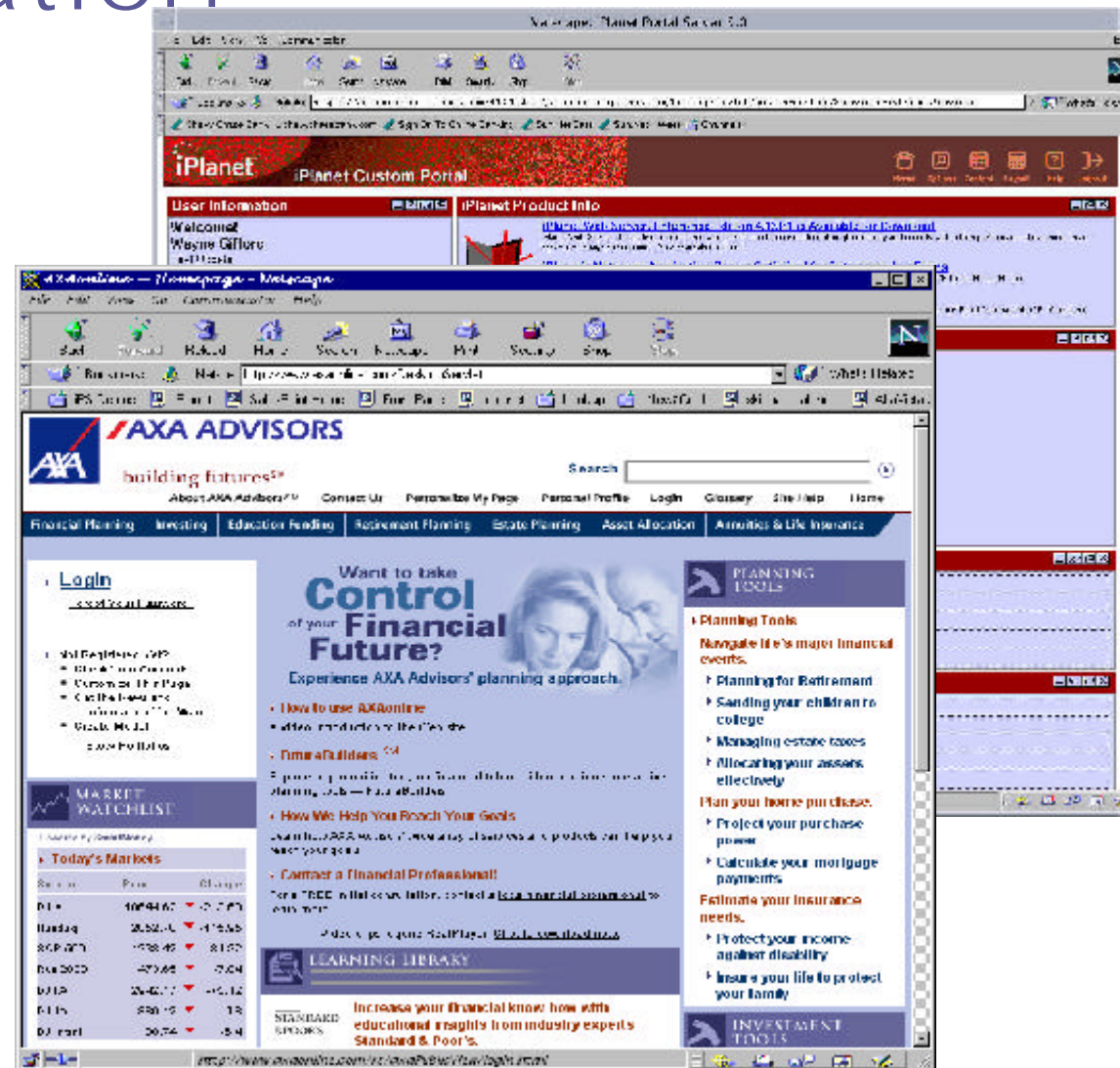
Layout: Organize your desktop



Customization and Personalization



- Enterprise-wide Customization
- Group level Customization
- User level Personalization



Application Access & Integration

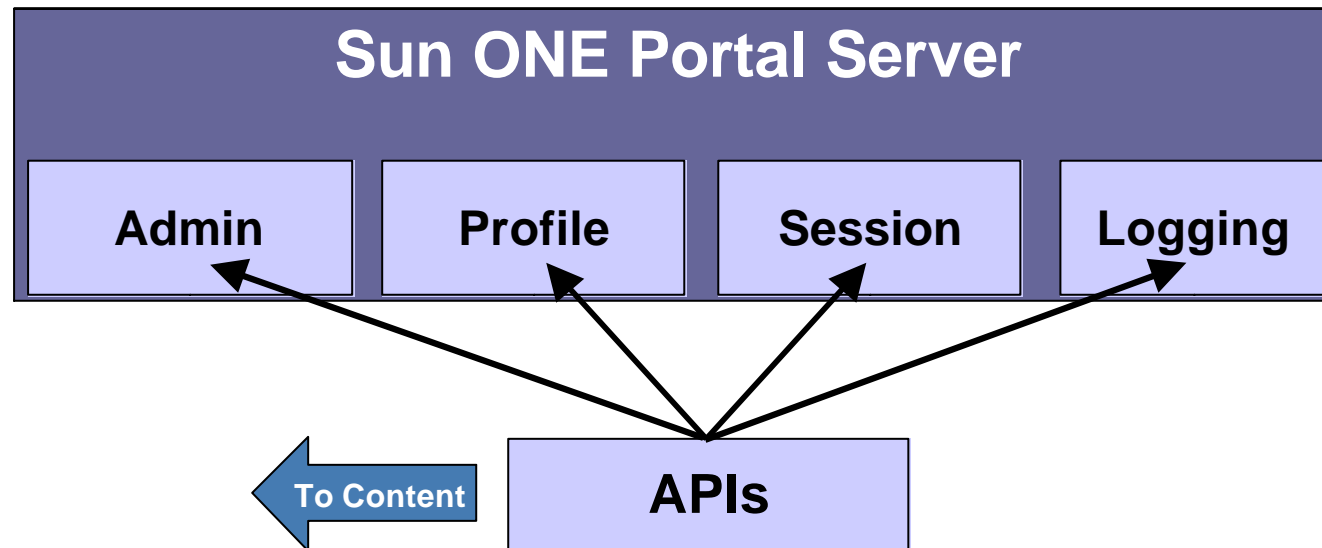
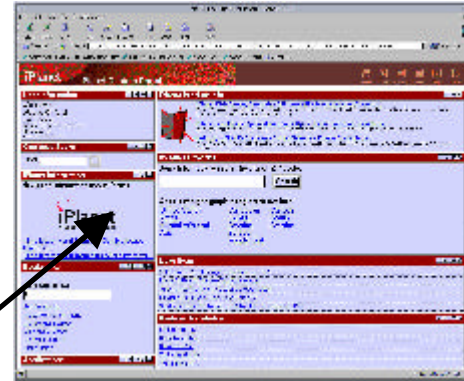


- Channels
 - HTML, XML
 - Java, JSP
 - Syndicated
- Easily extensible via documented APIs
 - Profile
 - Policy
 - Session
 - Logging
 - Content Provider
 - Authentication
- Sample code included in Programmer's reference guide

**APIs are Key to
Portal Server as an
open computing
platform**

Application Access & Integration

Custom
Desktop
Channel



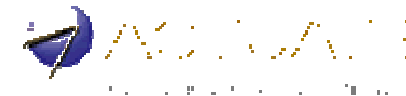
A Few of Our Partners



Lucent Technologies
Bell Labs Innovations



Schlumberger



NETGENESIS, A BROADENING WORLD BY EMPOWERING IT'S PARTNERS TO
ANALYZE, PREDICT, AND TAKE ACTION ON CUSTOMER DATA.



Technology Partner Portfolios

Search/Taxonomy

- Autonomy
- Inktomi

Web Tracking & Analysis

- NetGenesis
- WebTrends
- Macromedia
- Actuate

Data Analytics

- E.Piphany
- Hyperion

Content Management

- Interwoven
- OpenMarket
- Broadvision
- Vignette

Commerce Services

- Citrix

Personalization Engines

- NetPerceptions
- Blaze

Content Feeds

- Screaming Media
- YellowBrix
- Mediapps (Eur)
- AsiaOne (Asia)

EAI

- Forte Fusion
- Sun ONE Application Server

Legacy Systems

- Siebel
- Peoplesoft/SAP

System Integrator & Deployment Partners



Schlumberger ema



>
accenture



CAP GEMINI
ERNST & YOUNG

Deloitte
Consulting



PRICEWATERHOUSECOOPERS 



Sun ONE Portal Server – SHARP

? Scalability

- Sun ONE Portal Server design allows for both Horizontal and Vertical Scalability

? High Availability

- Sun Cluster
- No Single Point of Failure

? Reliability & Performance

- Java technology-based application
- Sun ONE Web Server (one of the fastest Java processing engines on Earth)
- Sun ONE Directory Server (industry leading)

Sun ONE Portal Server Architecture



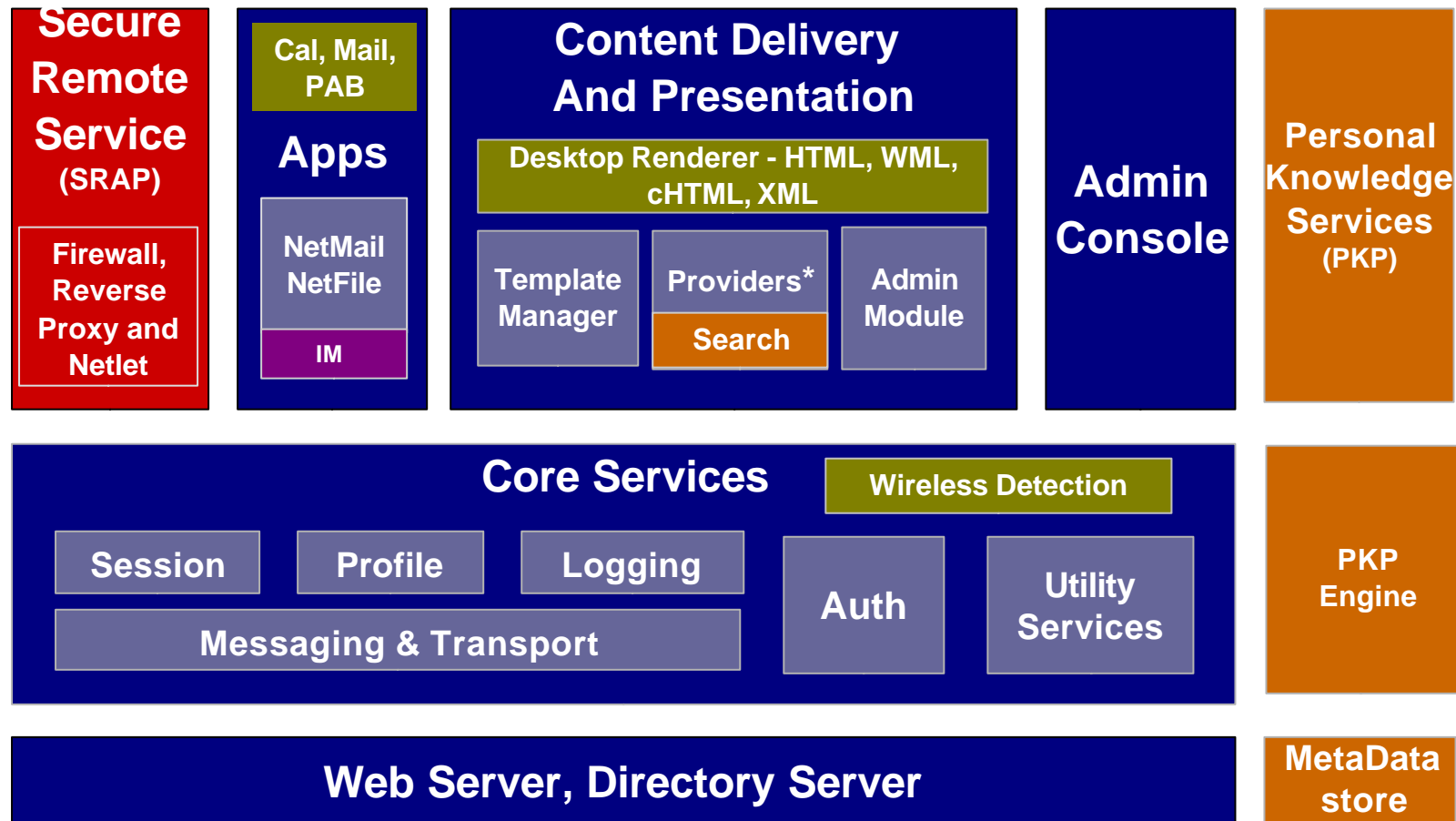
SRAP

MAP

PKP

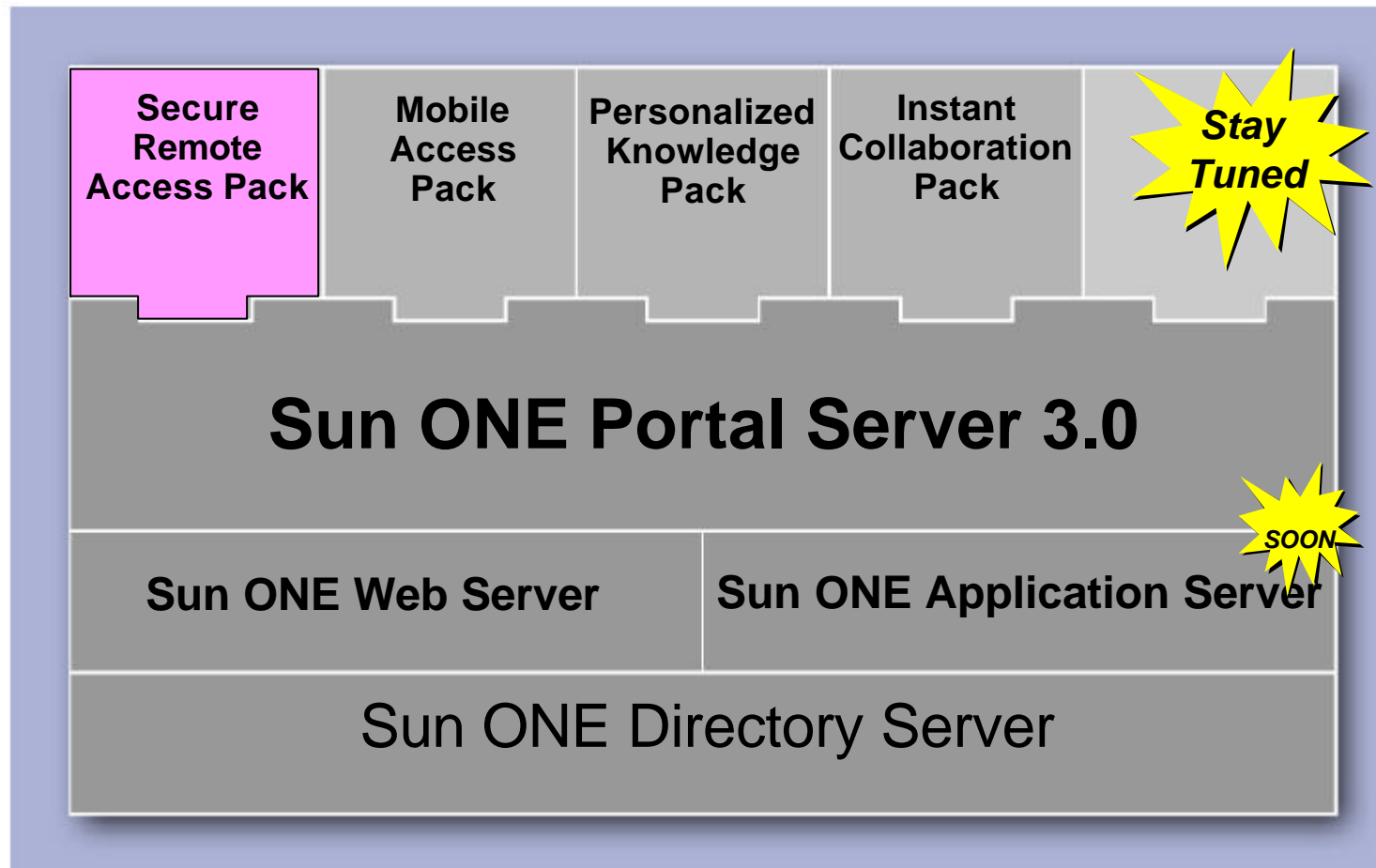
ICP

***Providers:** JSP, URL Scraper, RSS, User Info, Mail Check, Bookmark, Postit, Custom Providers...





Secure Remote Access Pack



Secure Remote Access Pack

? Delivering anytime, anywhere access

- Enables knowledge workers and business partners to remotely access their personalized corporate portal from anywhere
- Patented Web-based solution needs only a Java enabled browser

? Rapid, cost-effective deployment

- Simplified Administration requires no client side software installation, management or configuration
- Reduces costs for VPN, private dial-up access lines, dedicated modems, remote access servers and 800 toll free numbers

? Standards based privacy and security

- Encryption is provided by SSL and Java applet security
- Authentication proxies user authentication requests to existing authentication mechanisms

Secure Remote Access Pack Features



- **Gateway**

- Reverse proxy for a single secure access point to Intranet web applications and web pages
- URL rewriter for static HTML, ASPs, JSPs, App Servers, any HTML-based app (e.g. OWA, WebMail, Notes), etc
- URLs Access Control

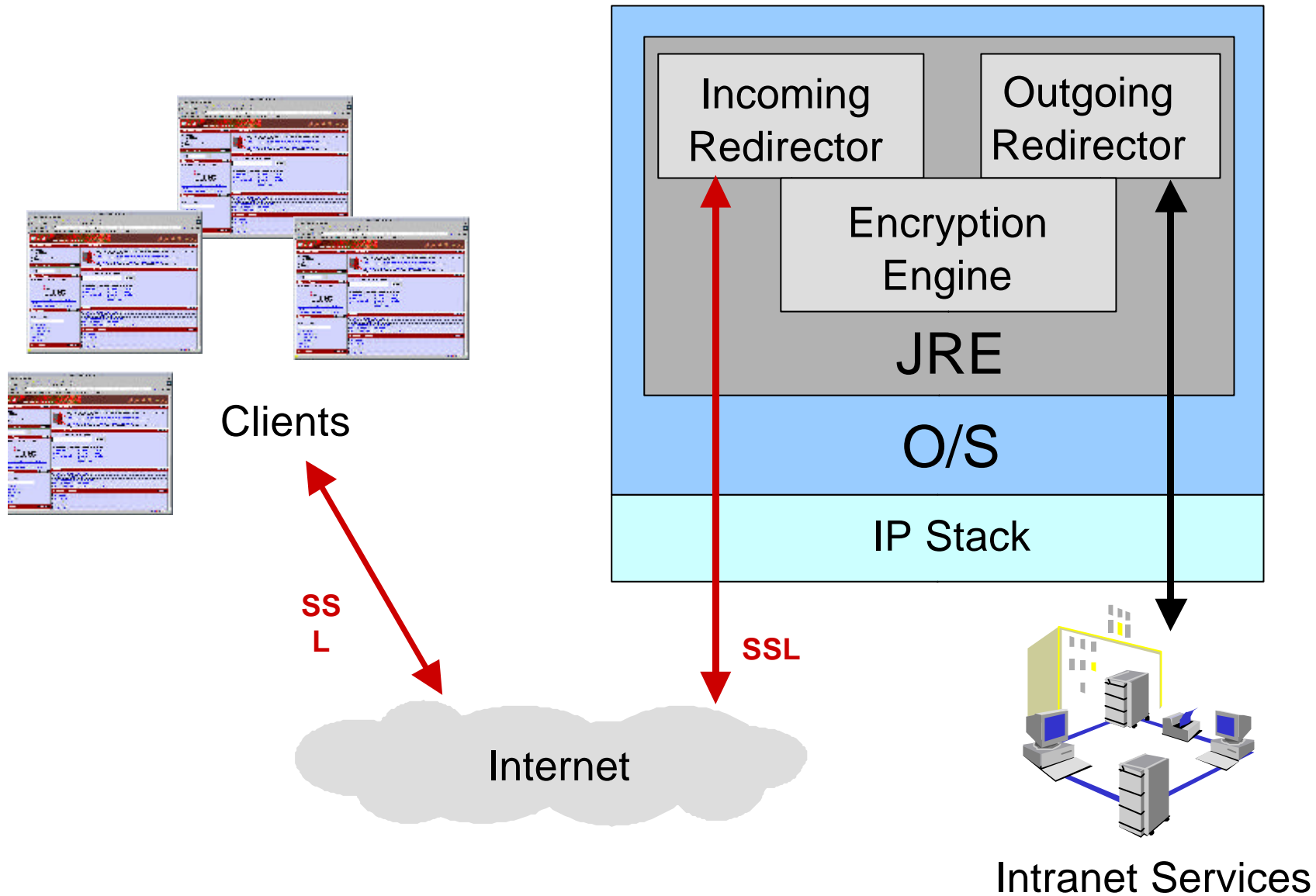
- **Netlet**

- On Demand secure encrypted TCP tunnel
- Download and execute applets
- Connect local applications to back end servers

- **Netfile**

- Heterogeneous file access (FTP, NFS, Windows (SMB))
- Compress, download, upload, mail features

Gateway Architecture

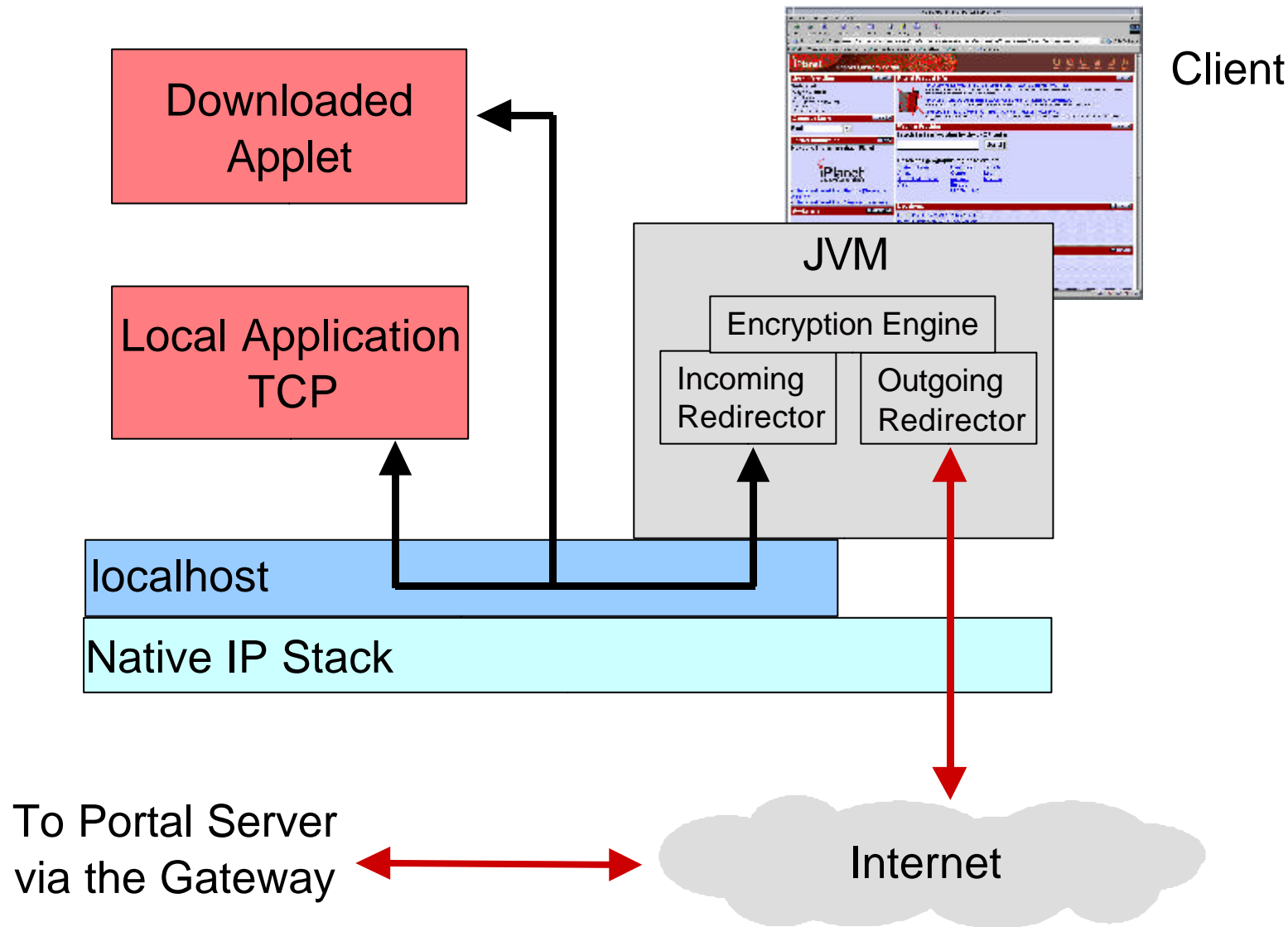




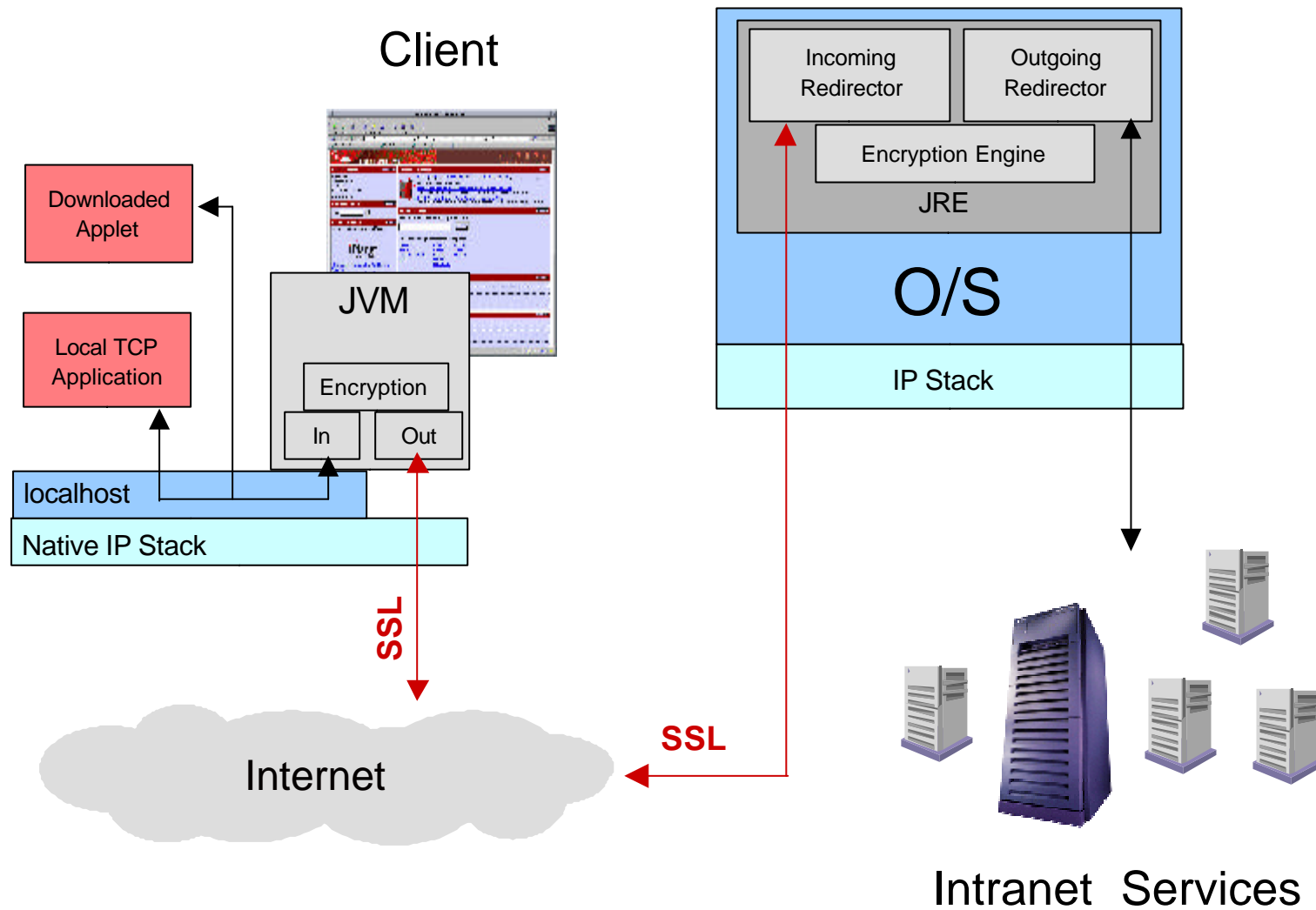
Netlet for Remote Application Access

- ? Display Redirection
 - Telnet / VT100
 - Citrix partnership for NT and Solaris
 - Remote printing supported
 - Drive mapping supported
 - Symantec PCAnywhere: Remote Control of PCs
 - TN3270 / TN5250
 - Java-based clients via public domain or 3rd parties
- ? Any TCP-based program with fixed port
 - Lotus Notes, IMAP / POP clients, etc
 - Microsoft Exchange dynamic port assignment

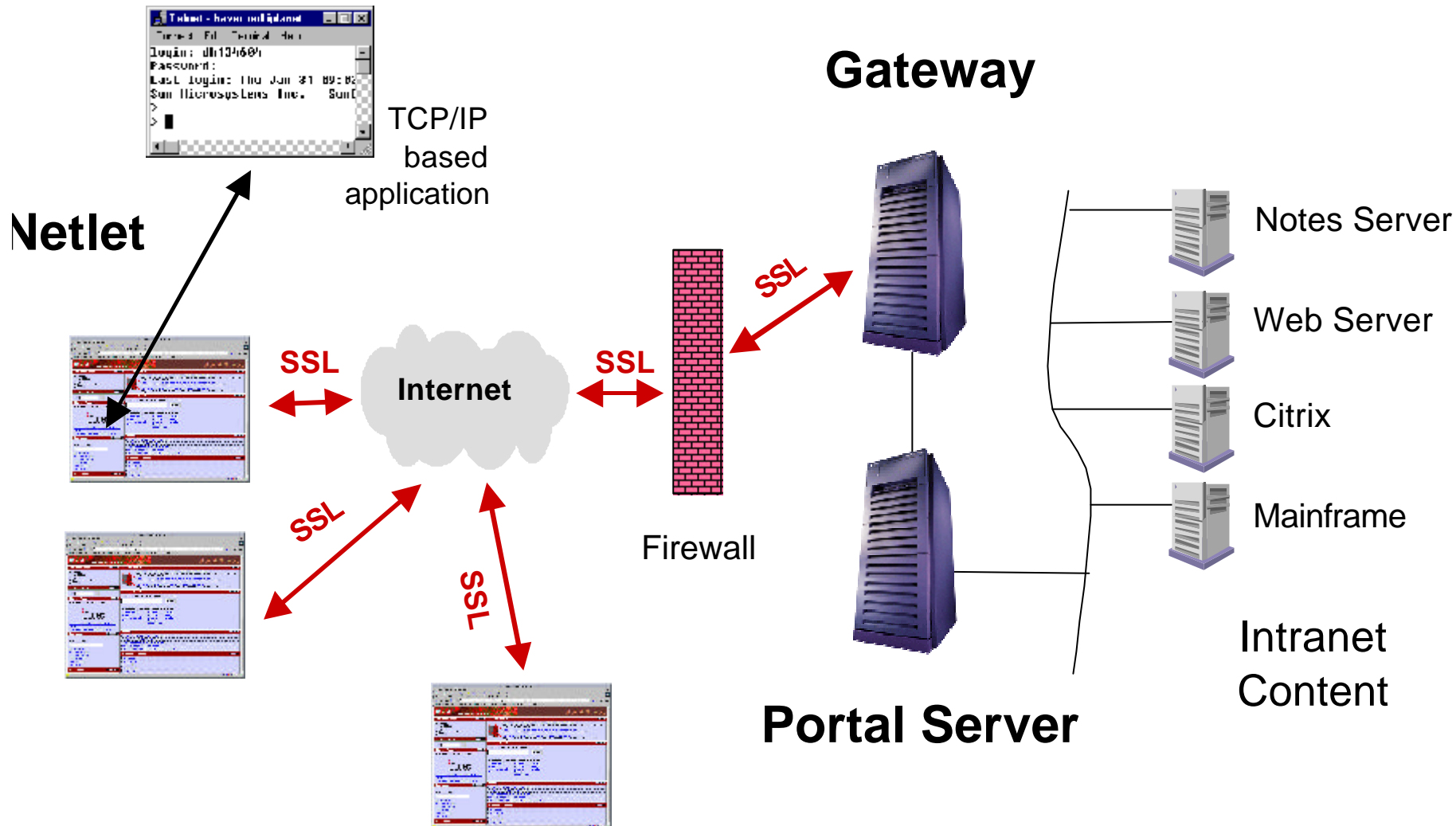
Netlet Architecture



Netlet and Gateway



Typical Deployment

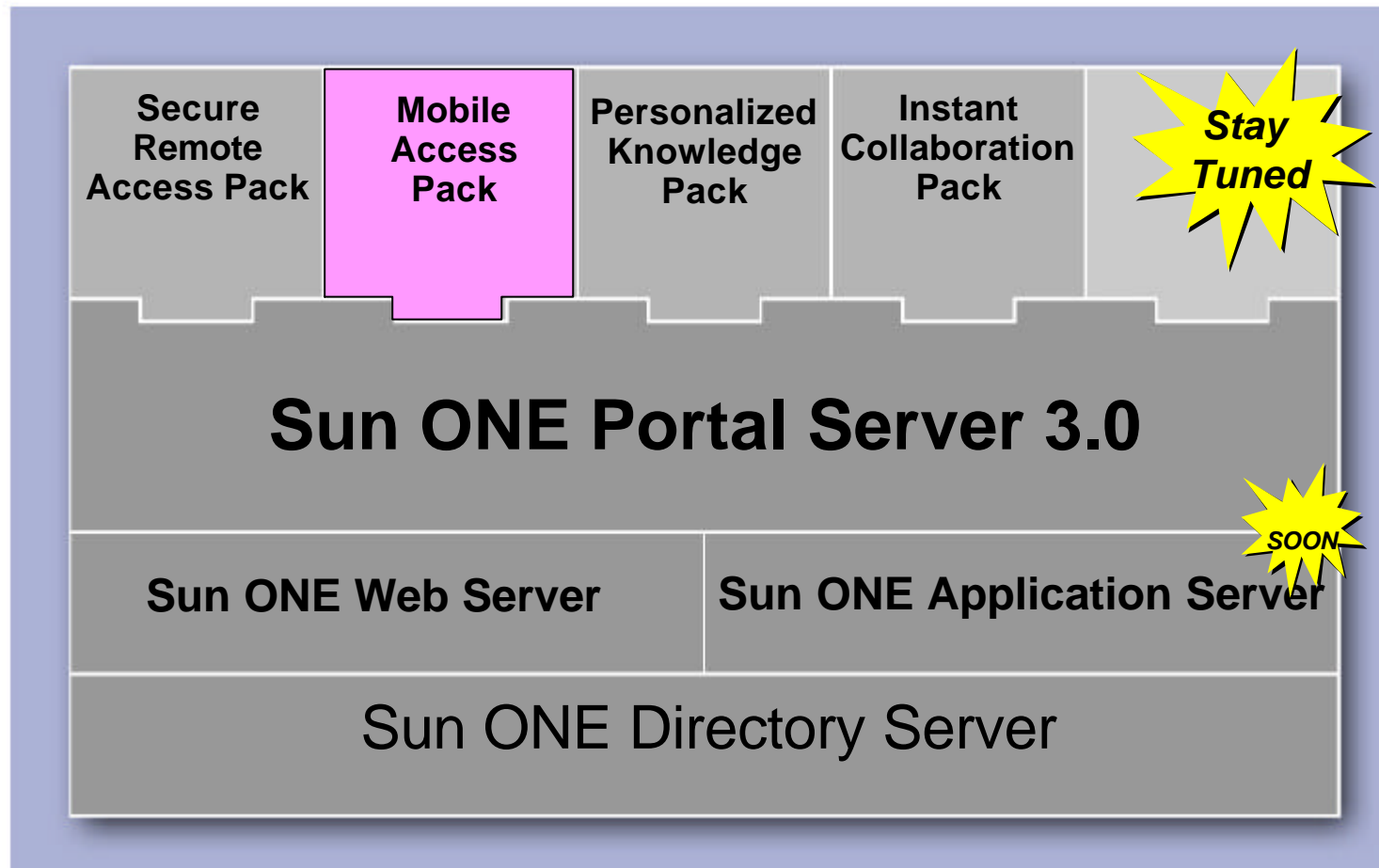


Examples



- Sun.net – Secure Business-to-Employee Portal
- MLB.com – B2C Portal
- TNT Vacations – B2C & B2E Portal

Mobile Access Pack



Mobile Access Pack



Extract a Portal
desktop channel
and provide it via
WML, CHTML or
voice

Mobile Access Pack



- ? Multi-Device Personalized Content and Services
 - Provides Sun ONE Portal Server users access to personalized content and services from any device
- ? Robust Solution
 - Supports today's wireless service delivery protocols, WAP and i-mode
 - Uses standard Internet protocols such as IMAP, XML, LDAP, and HTTP
- ? Fully Integrated
 - Sun ONE Portal Server, Messaging Server, Calendar Server, Directory Server and Personal Address Book
- ? Feature Rich
 - Provides the most requested mobile services such as SMS and location-based services like maps, directories, weather and yellow pages

Mobile Access Pack Features

? Services

- Out-of-the-box Mail, Calendar, Address book channels
- XMLProvider to create channels from any XML content source using channel Wizard and XSL
- Client aware URLScraper to scrape WML and cHTML channels from remote URLs
- Location Based services

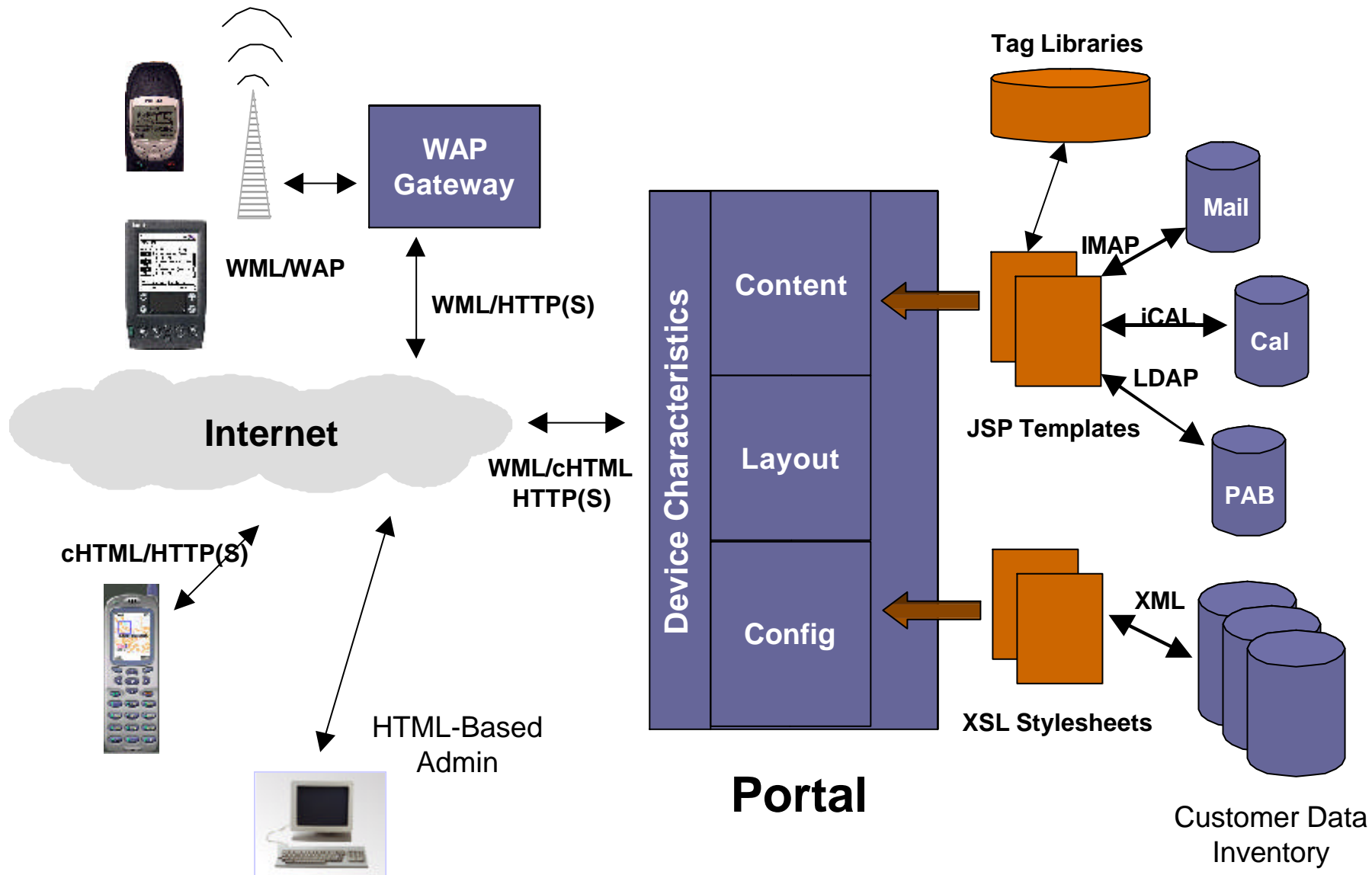
? Client Aware

- Authentication
- Desktop and Content Presentation
- Layout Management

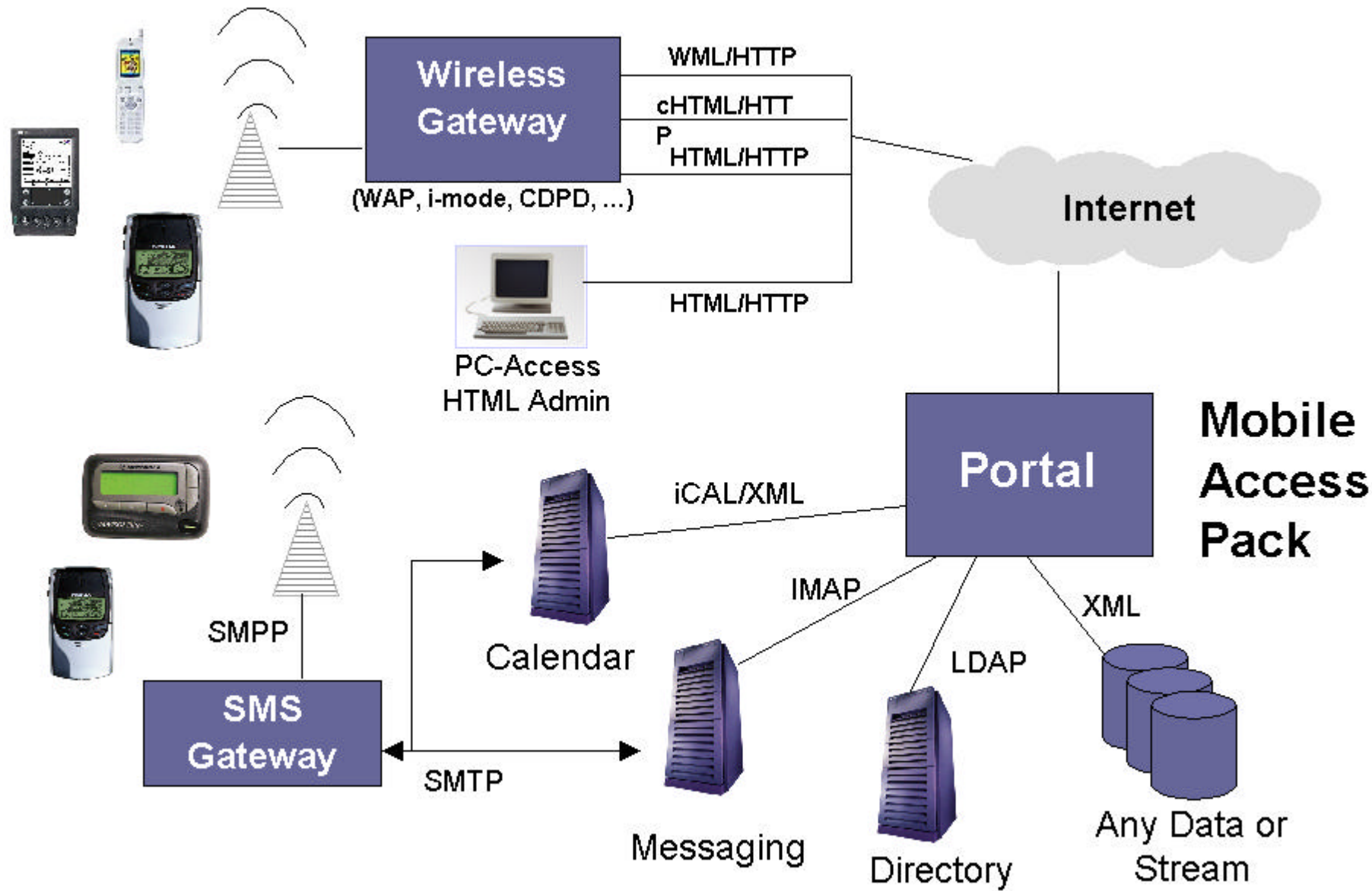
? SHARP

- Scalability, High Availability, Reliability, and Performance

Mobile Access Pack Architecture

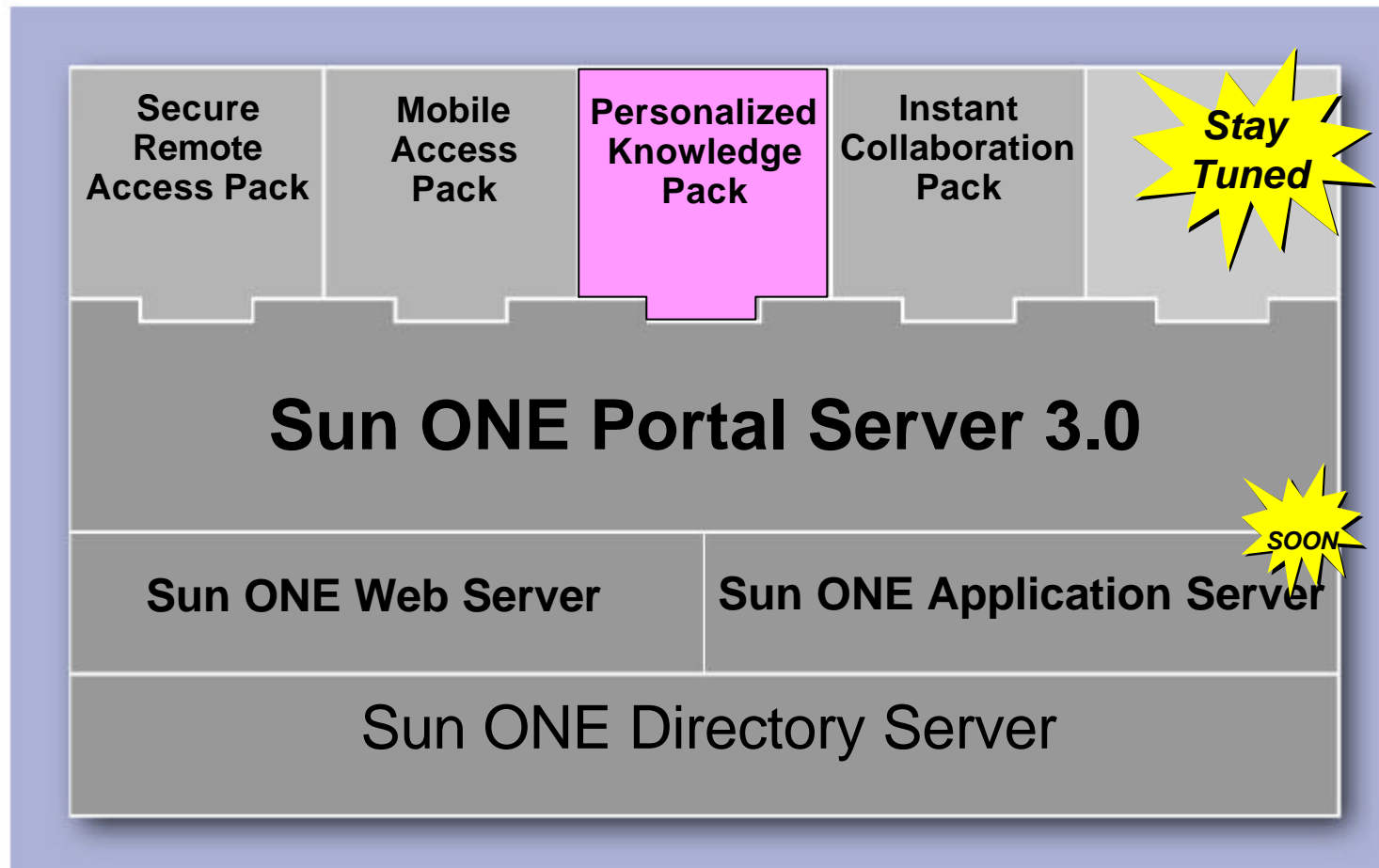


Typical Deployment



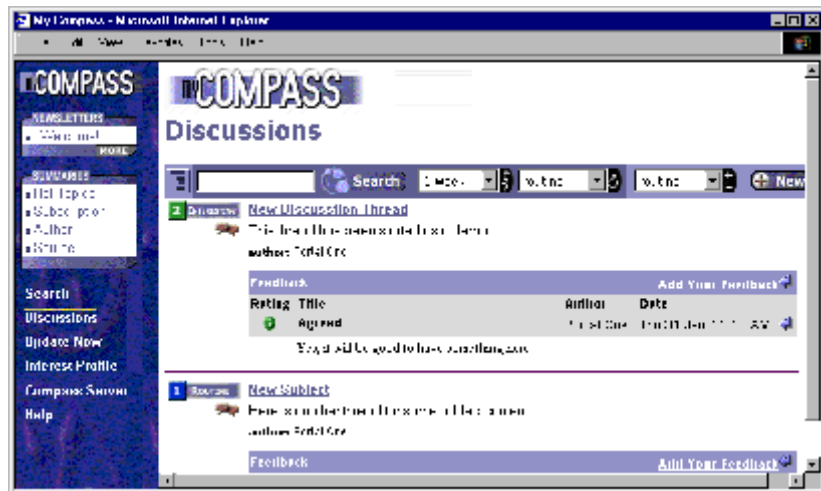


Personalized Knowledge Pack

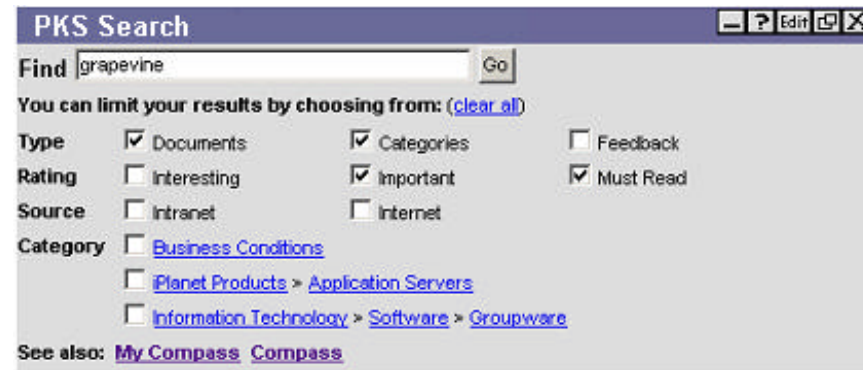


Personalized Knowledge Pack

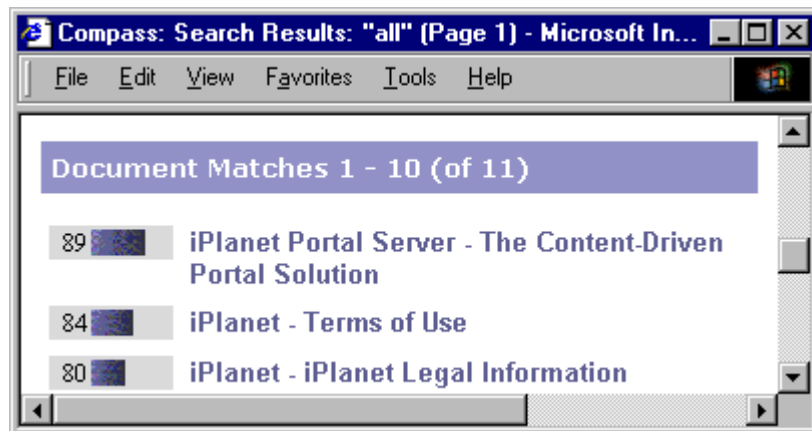
Discussion Threads



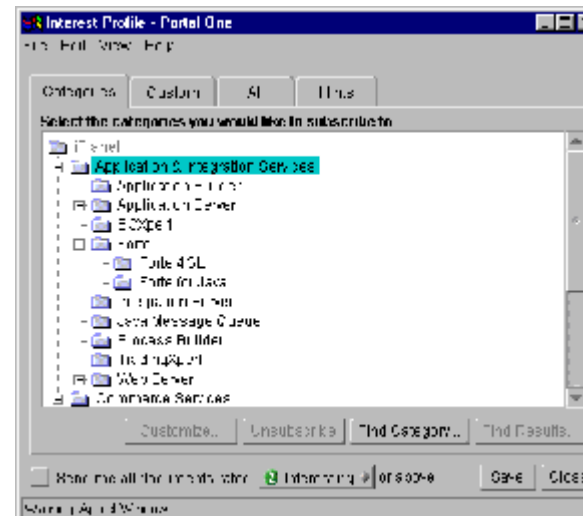
Portal Channel Integration



Ranking/Search



Interest Profiles



Personalized Knowledge Pack

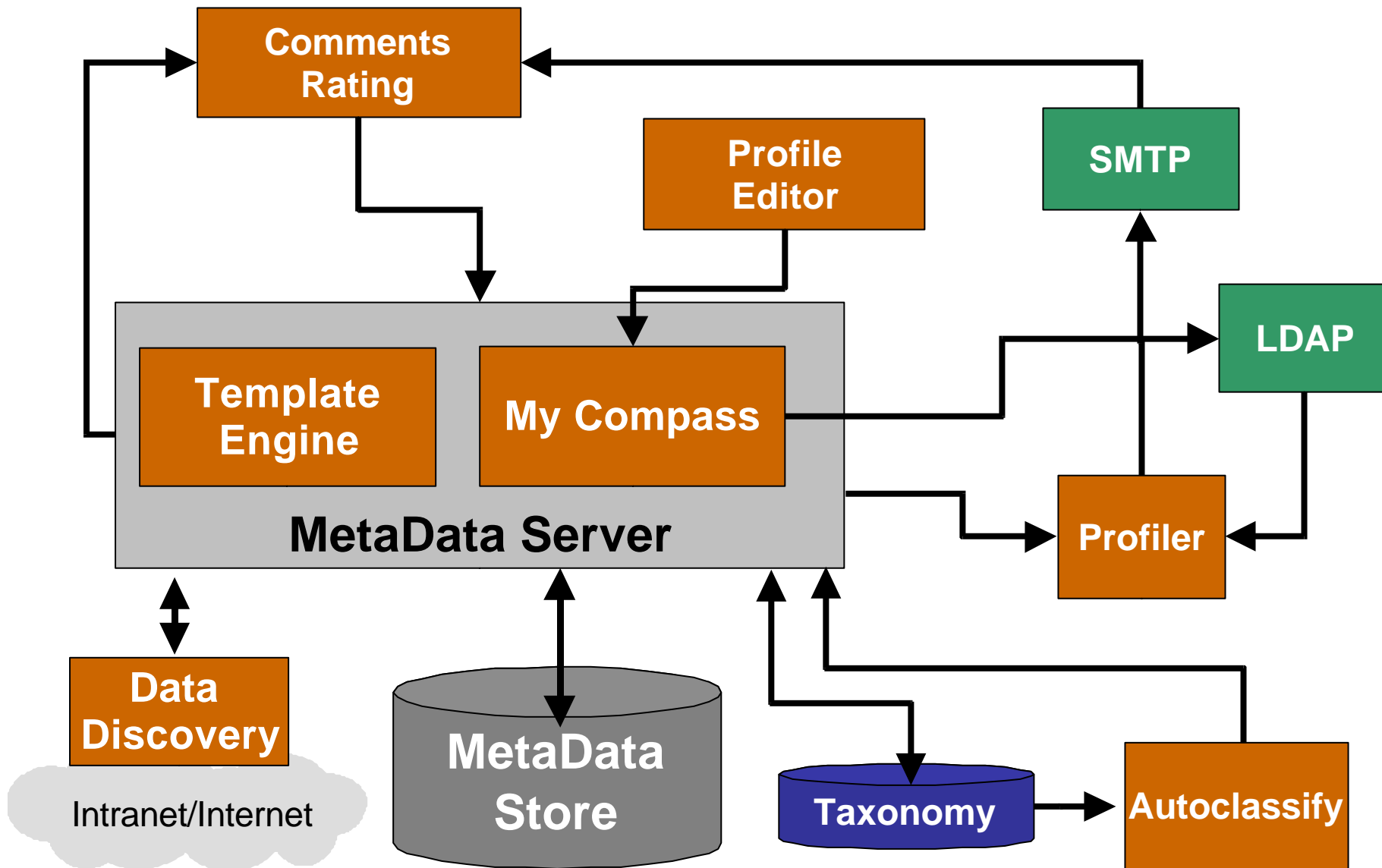
- ? Saves users time
 - Interest profiles let users filter and personalize search results to receive only relevant content
 - Community rankings help reduce information overload
- ? Improves decision-making, fosters innovation
 - Access to relevant content makes users better-informed
 - Alerts ensure that users are aware of new content in a timely manner
 - Threaded discussions add additional knowledge sharing capabilities
- ? Auto-classification is more efficient than manual
 - Manually classifying documents cannot be done in a timely or efficient manner
 - Auto-classification ensures that content is made available rapidly and not delayed by manual processing

PKP Features



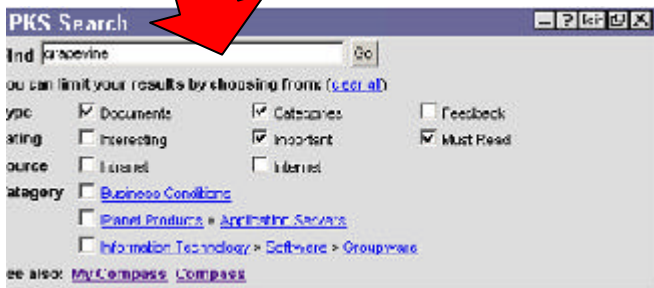
- ? Personalization
 - Allow users to save searches, subscribe to categories and set up personal alerts through interest profiles
- ? Document classification
 - Auto-population of the taxonomy saves manual classification time
- ? Document ranking
 - Community ranking can be used as a filter of document importance or quality
- ? Discussion threads
 - Allow users to comment on and discuss documents and content
- ? SHARP
 - Scalability, High Availability, Reliability, and Performance

Personalized Knowledge Architecture

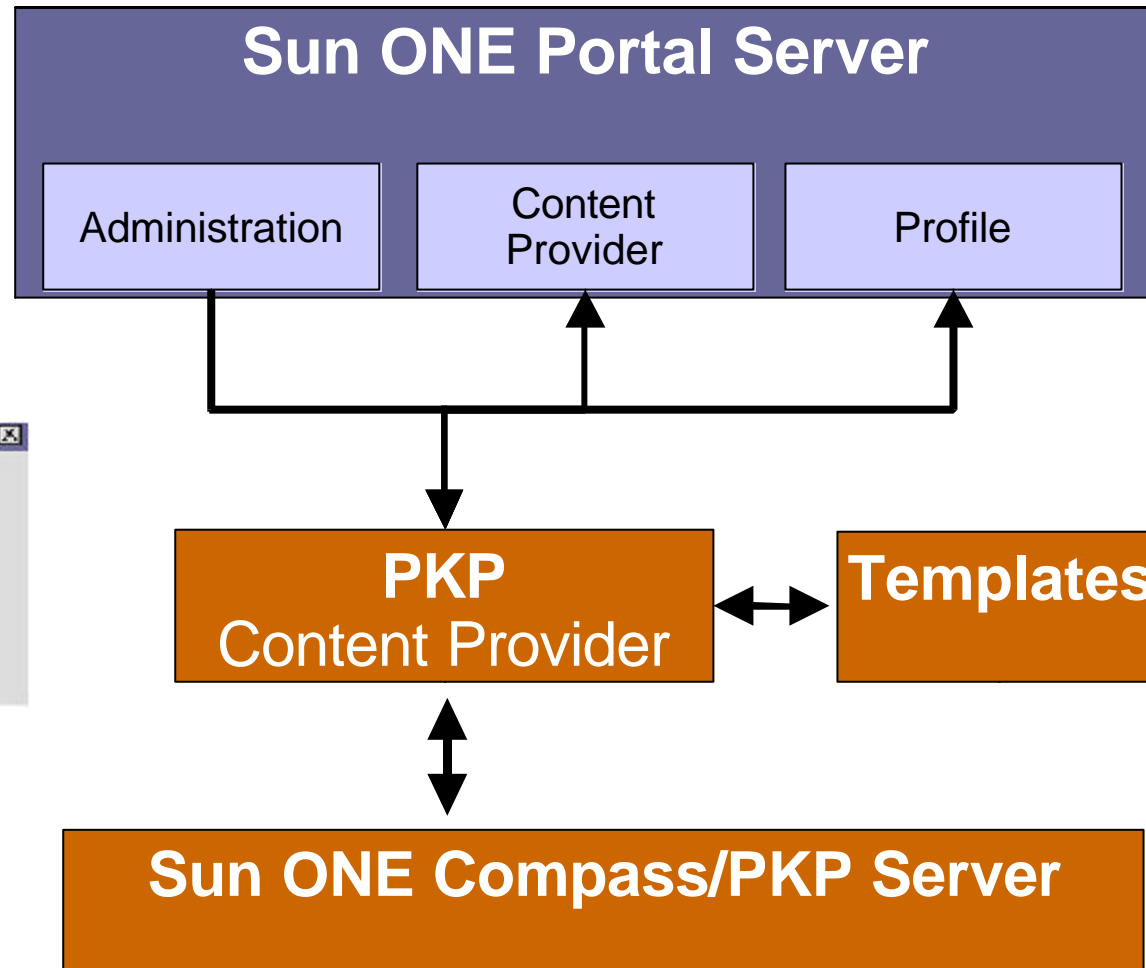


Architecture – Integration w/ Sun Portal

Portal



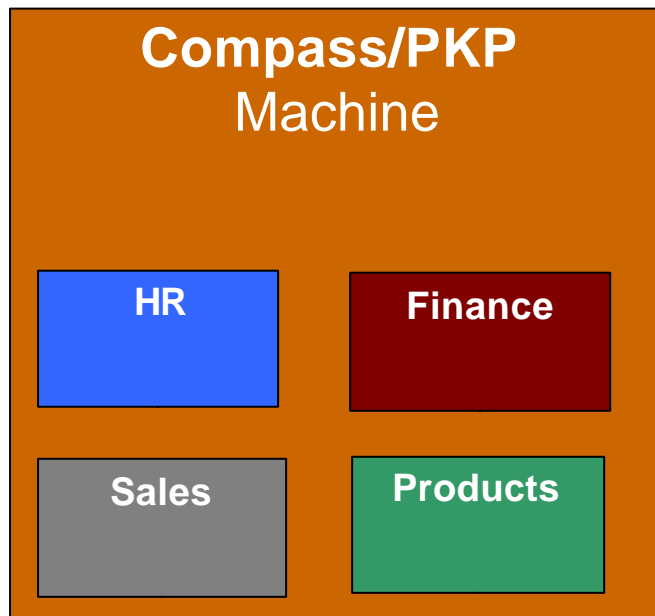
PKP Channel



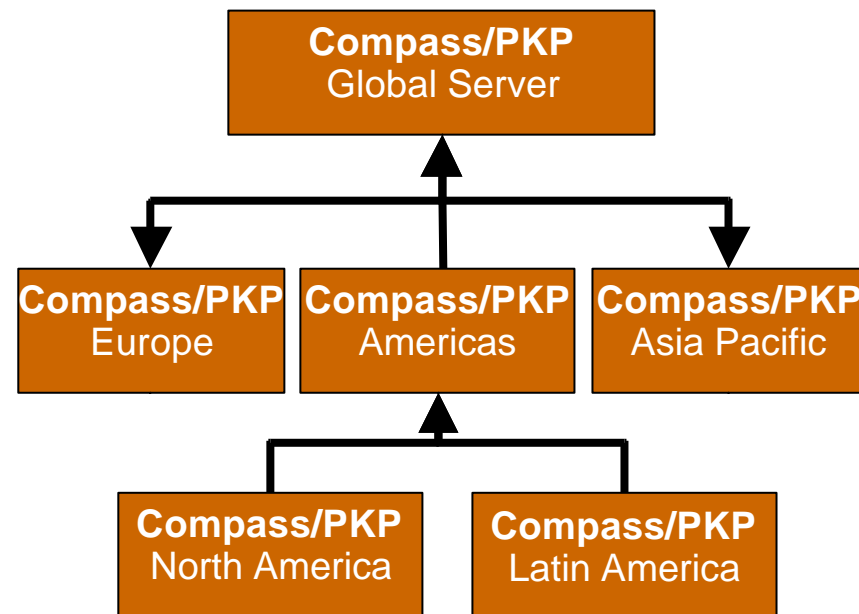
Implementation Architectures



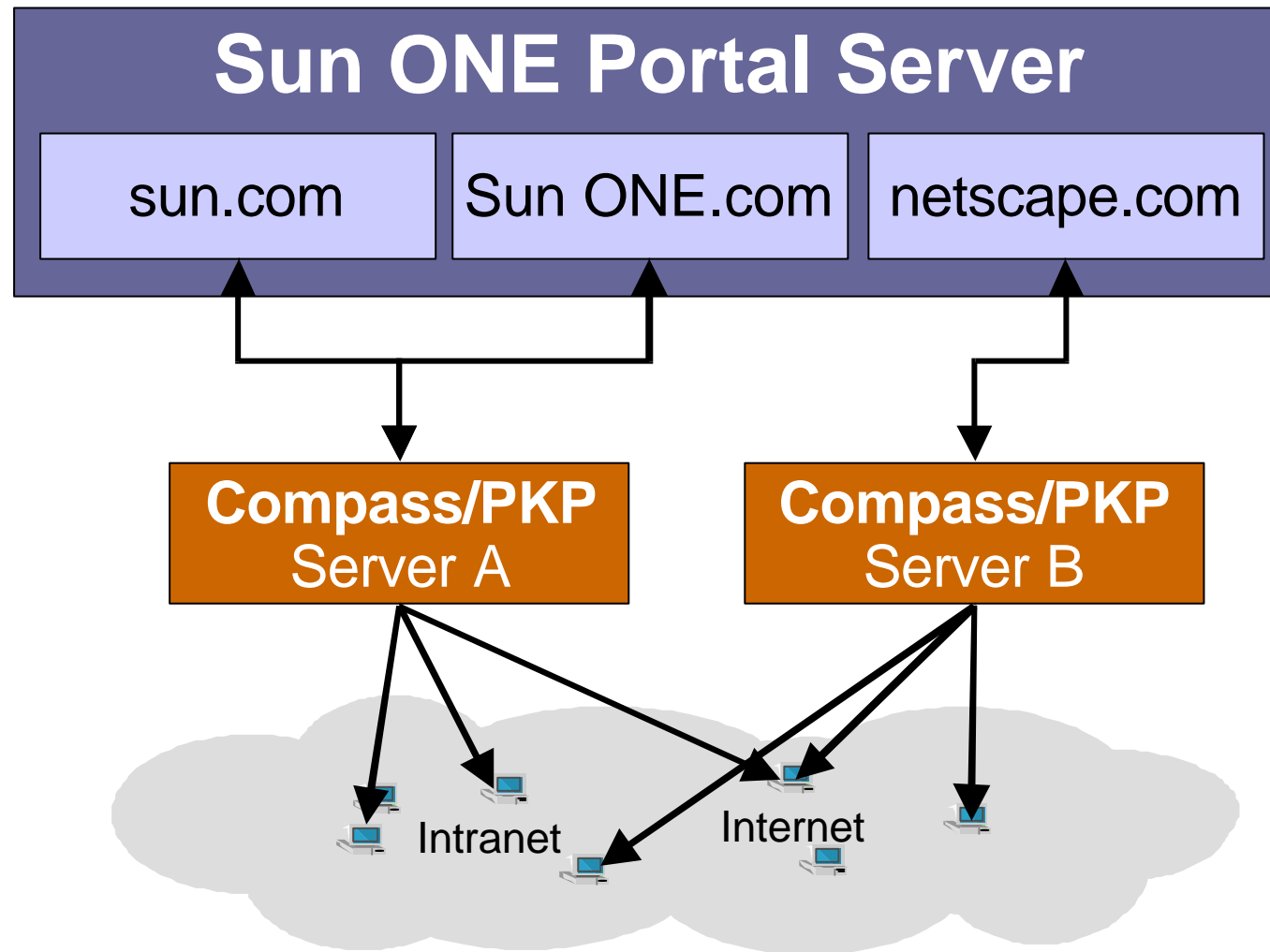
Multiple Instances



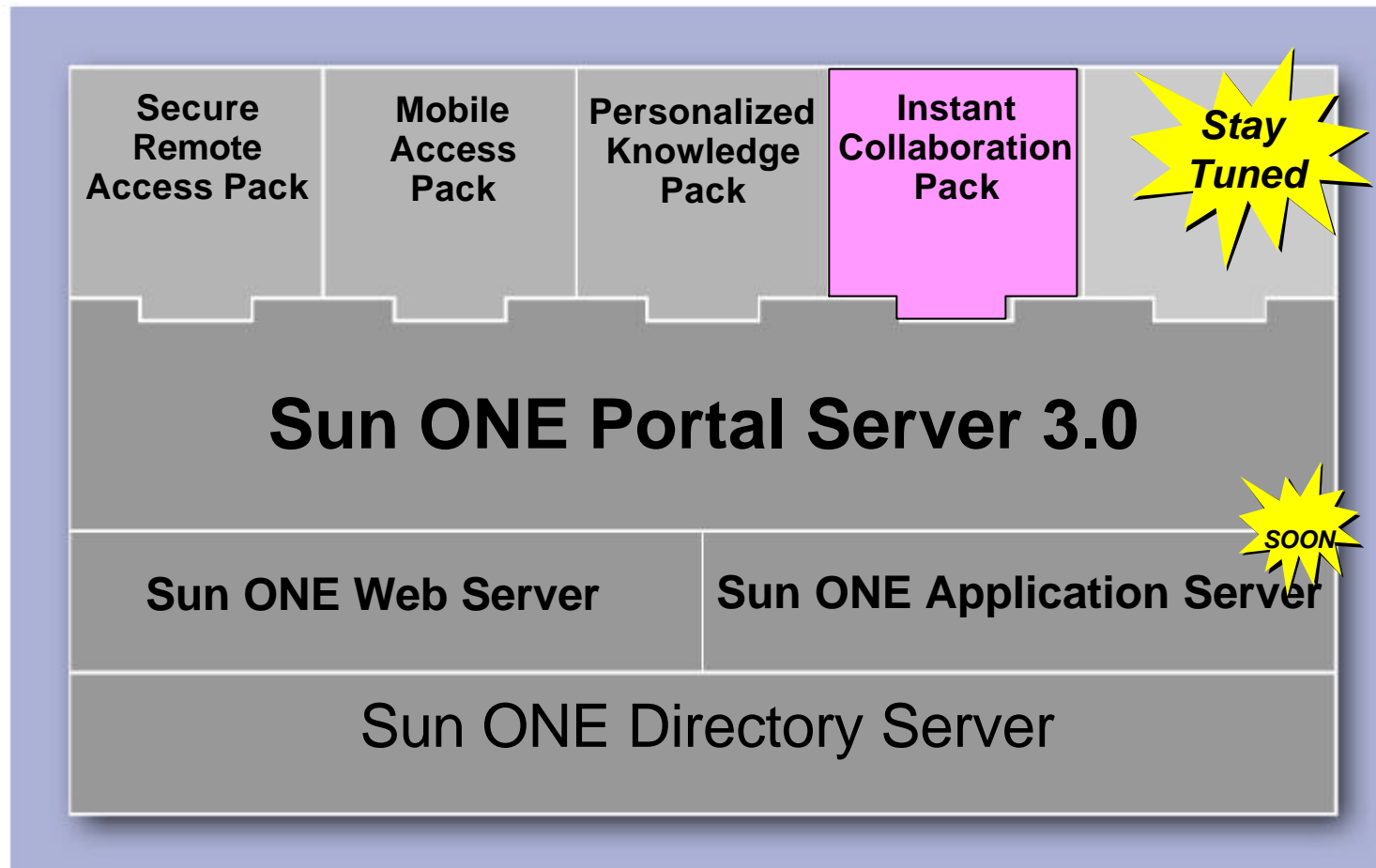
Distributed Discovery



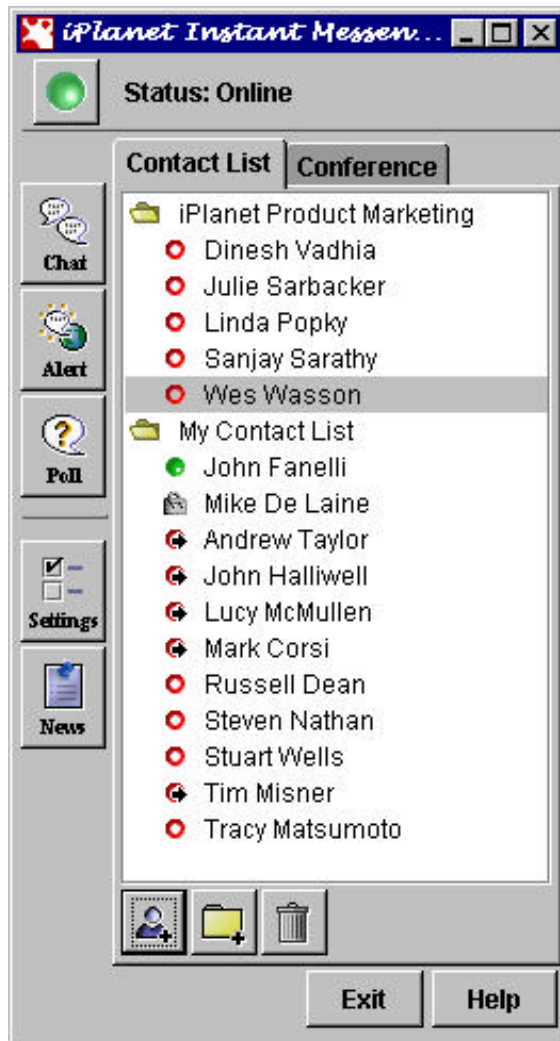
Typical Deployment



Industry's Broadest Portal Offering



Instant Collaboration Pack



Instant Messaging & Notification



Presence & Availability

Instant Collaboration Pack



- Extends user communities and context, helping to decrease decision cycle-time
 - Adds instant collaboration capabilities including chat, IM, polling, and file exchange
- Increases productivity, customer/partner satisfaction
 - Enables portal users across the **extended enterprise** to securely collaborate, chat, and share files
 - Allows customers and partners to immediately and securely resolve sales or support issues via the portal
- Assures businesses “piece of mind” by providing a secure and integrated environment
 - Leverages security, authentication, community management, personalization, single sign-on, and secure remote access features of the portal

ICP Features



- ? Instant Messaging & Notification
 - Acknowledged end-to-end messaging (single cast & multi-cast)
 - Alerts
 - Polls
- ? Collaboration & Conferencing
 - Chat rooms
 - News channels
 - Virtual Team Creations
- ? Availability and Presence
 - Customized Buddy Lists
 - Query or subscribe to others' availability
 - Advertise one's availability and location
- ? Administrative Features
 - Brand-able UI
 - Rule-based feature segmentation
 - Logging of interactions

ICP Features



? Multi-Media Types Supported

- Text, Rich text, URLs
- Alert forwarding (pagers, SMS)
- File Transfer (attachments)

? Integrated Offering

- Sun ONE Directory Server
- Sun ONE Portal Server & SRAP

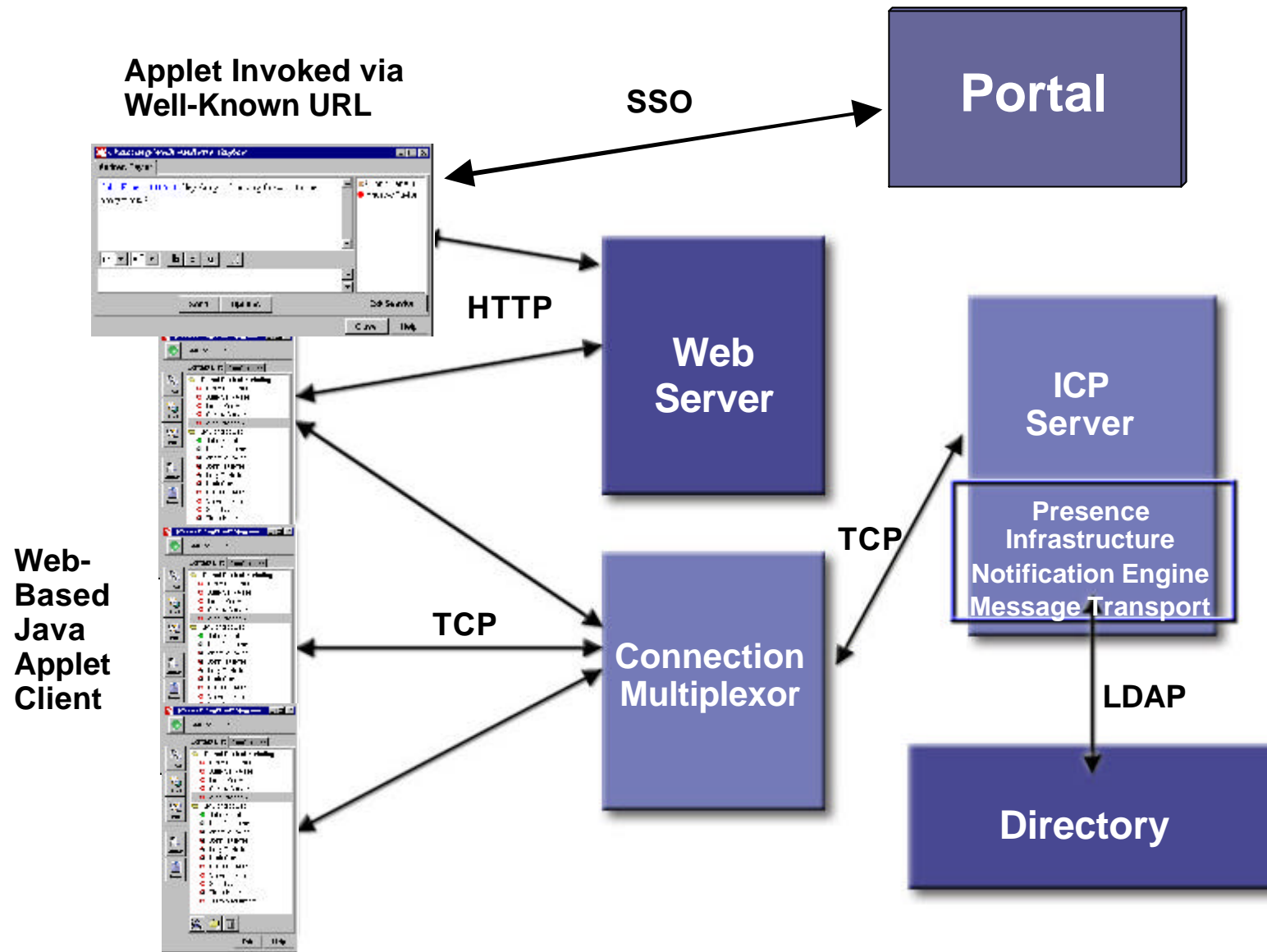
? Multi-Platform Support

- Solaris, Windows NT

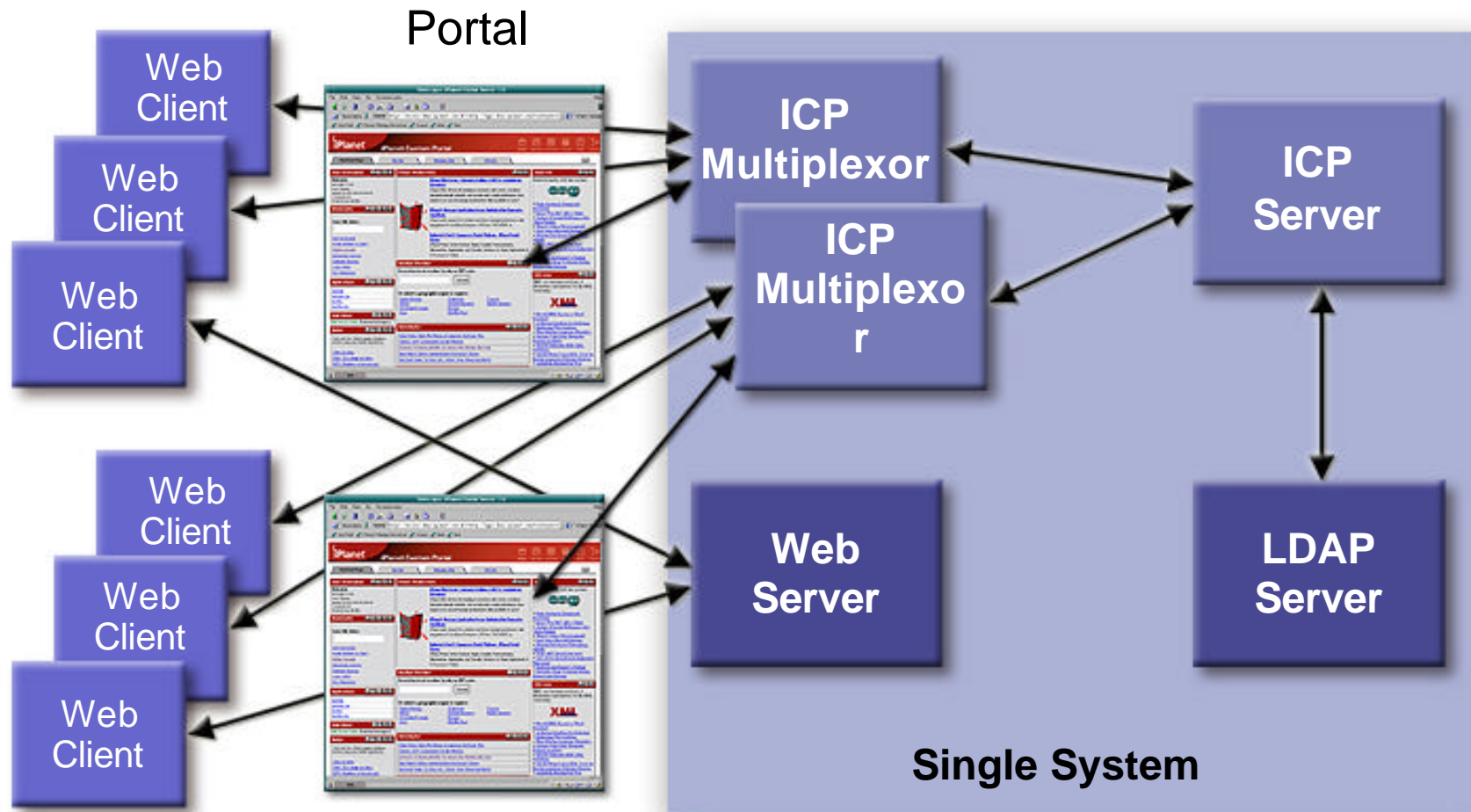
? Other

- Scalability, High Availability, Reliability, and Performance
- Geographically distributed architecture
- Secure Server-to-Server Communications
- Internationalization and Localization

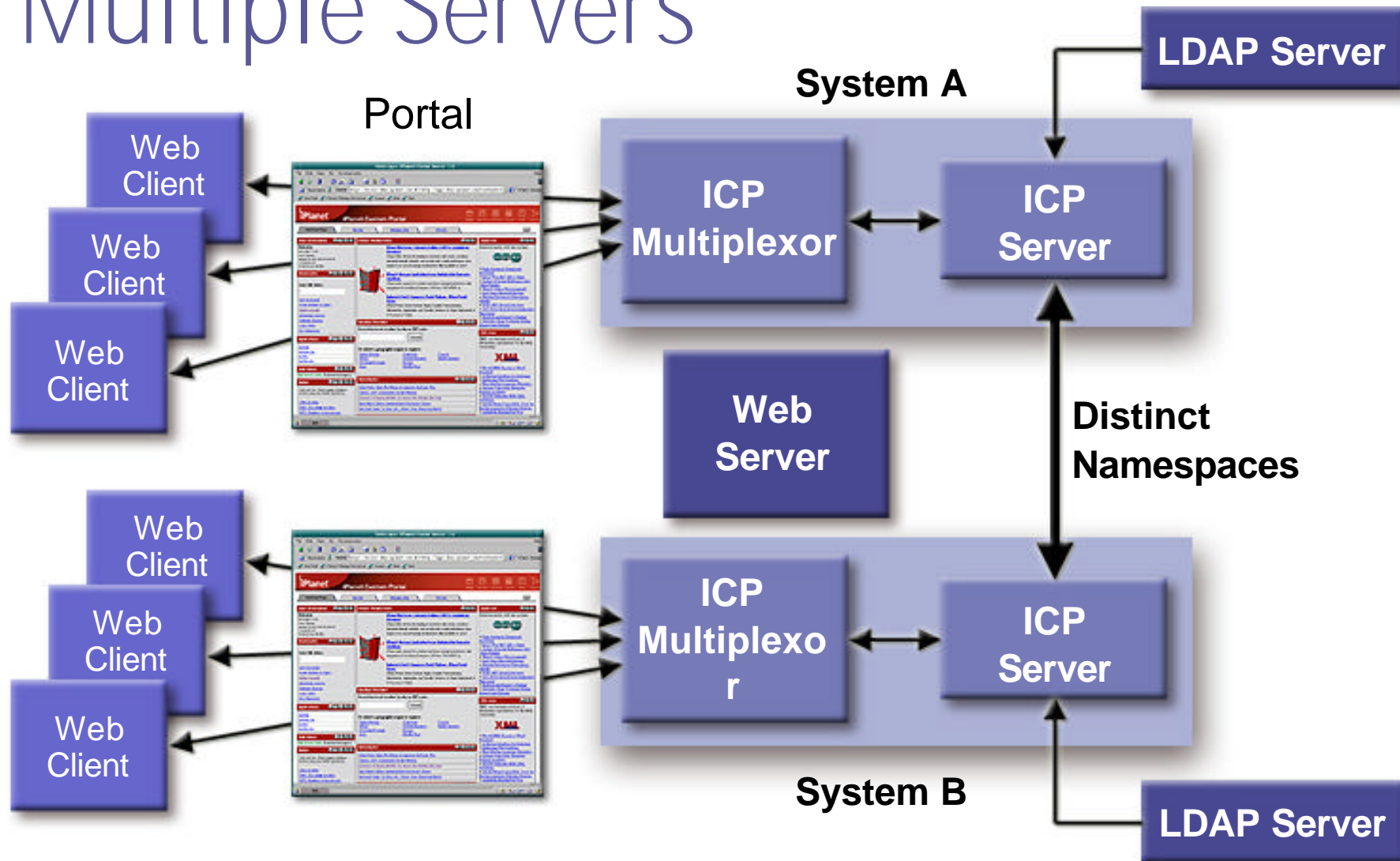
ICP Architecture



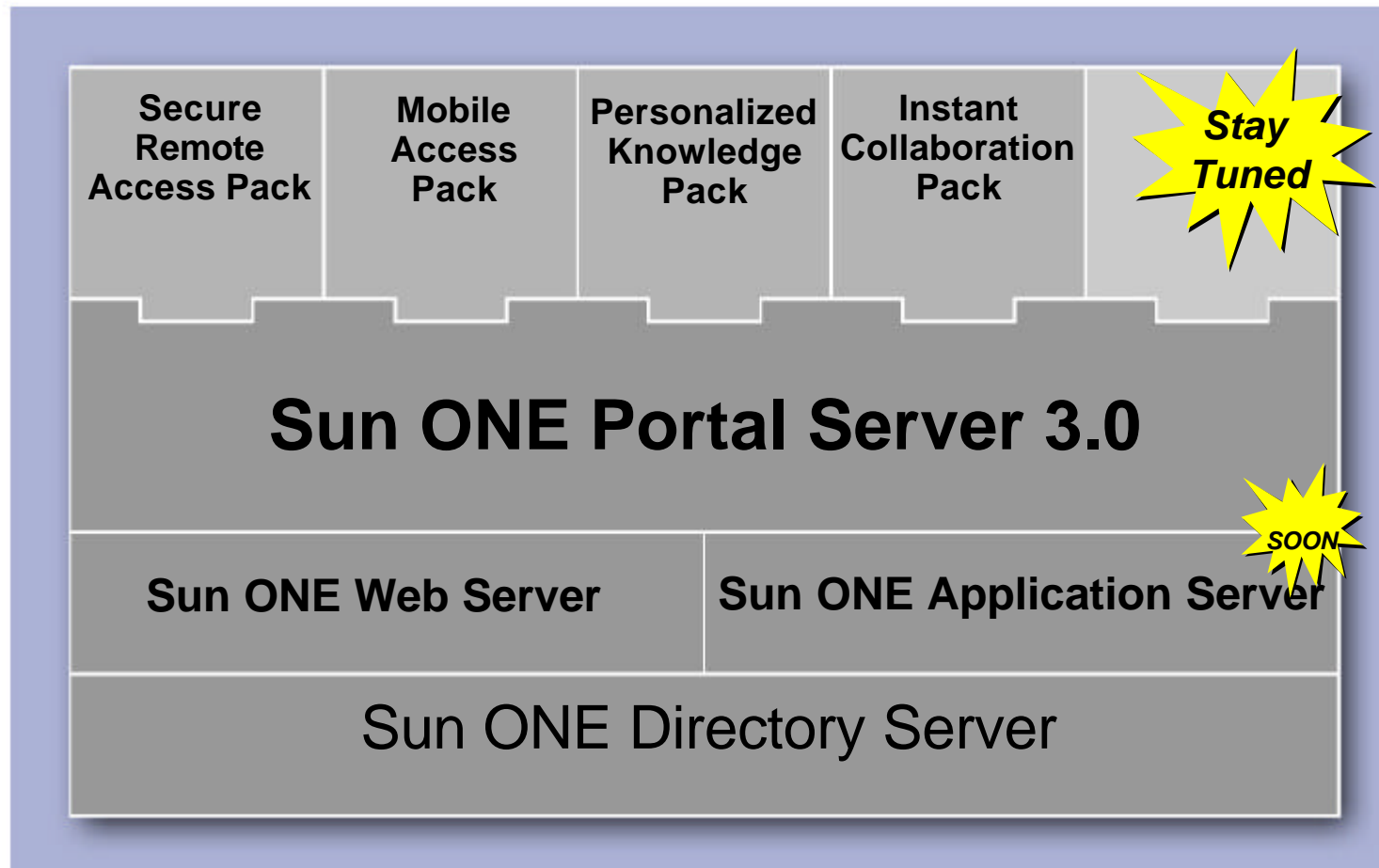
Typical Deployment - Single Server



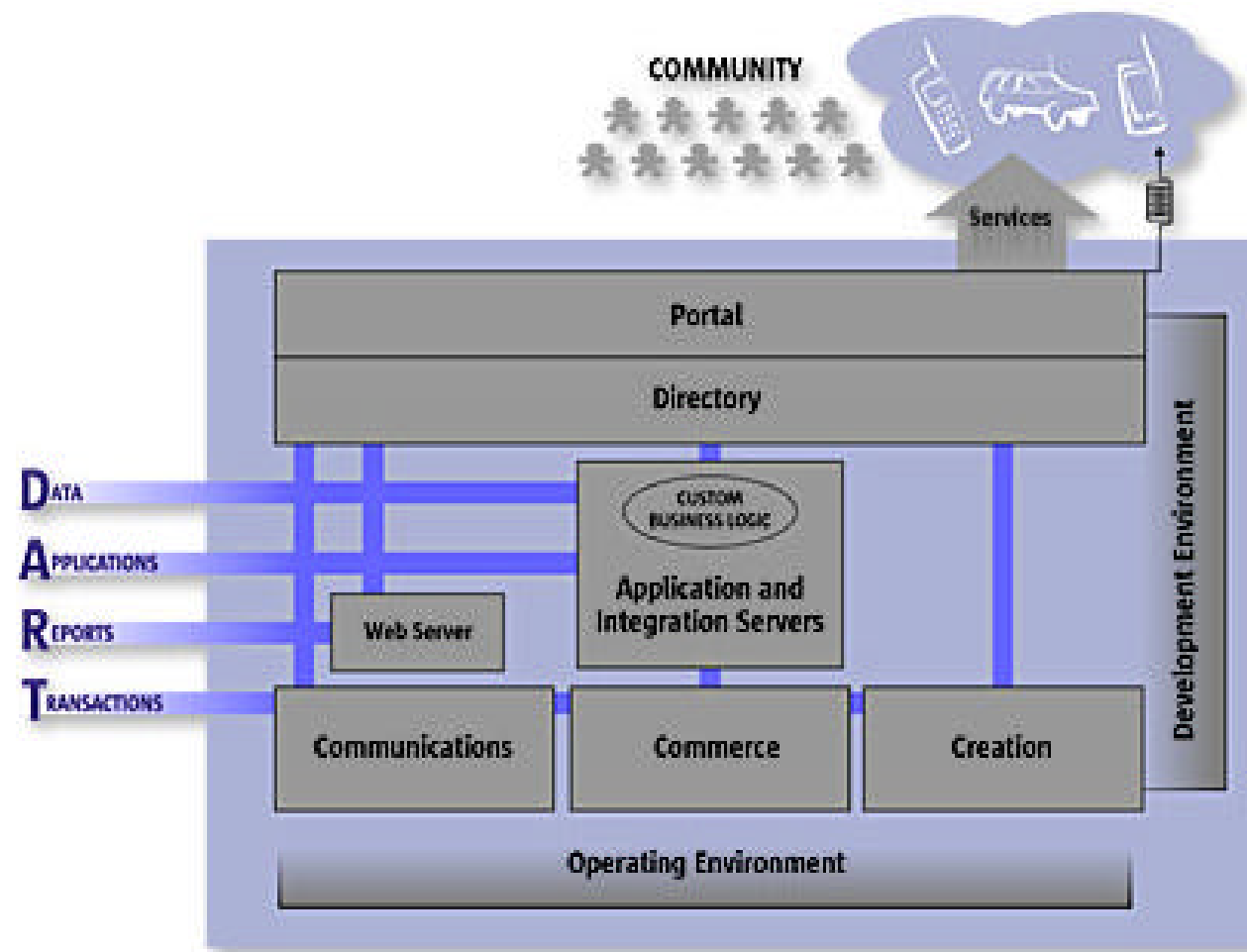
Typical Deployment – Multiple Servers



Industry's Broadest Portal Offering



Sun Open Net Environment



Sun™ ONE Architecture



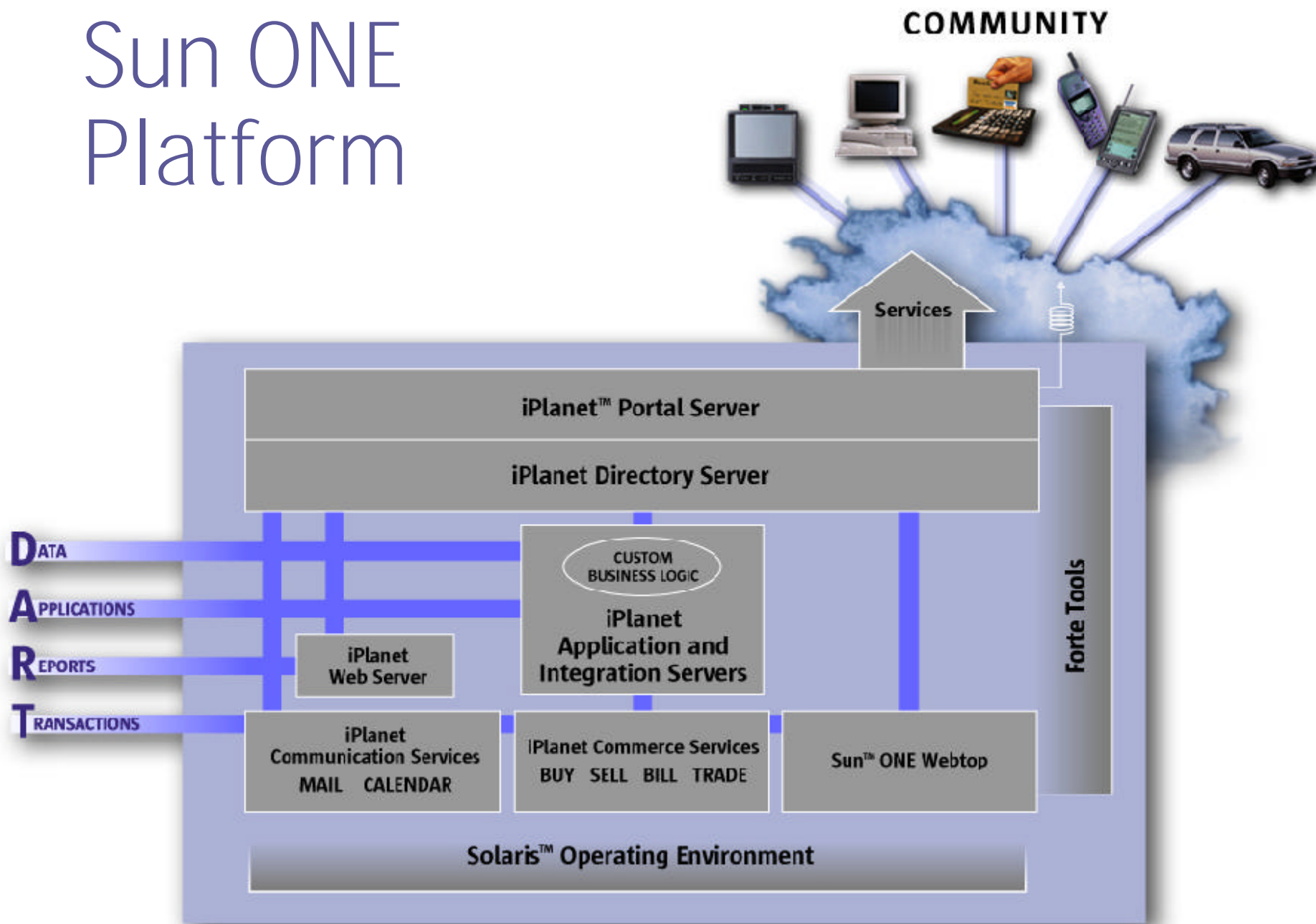
- The Sun ONE architecture helps companies leverage Services on Demand according to their business needs
- Highly scalable to meet the demand for service (24-by-365 availability) amidst exponential growth in traffic and new service deployments
- Integratable because of its basis in open standards and technologies
- DART (data, applications, reports, transactions) to transform corporate assets to services

Sun™ ONE Platform



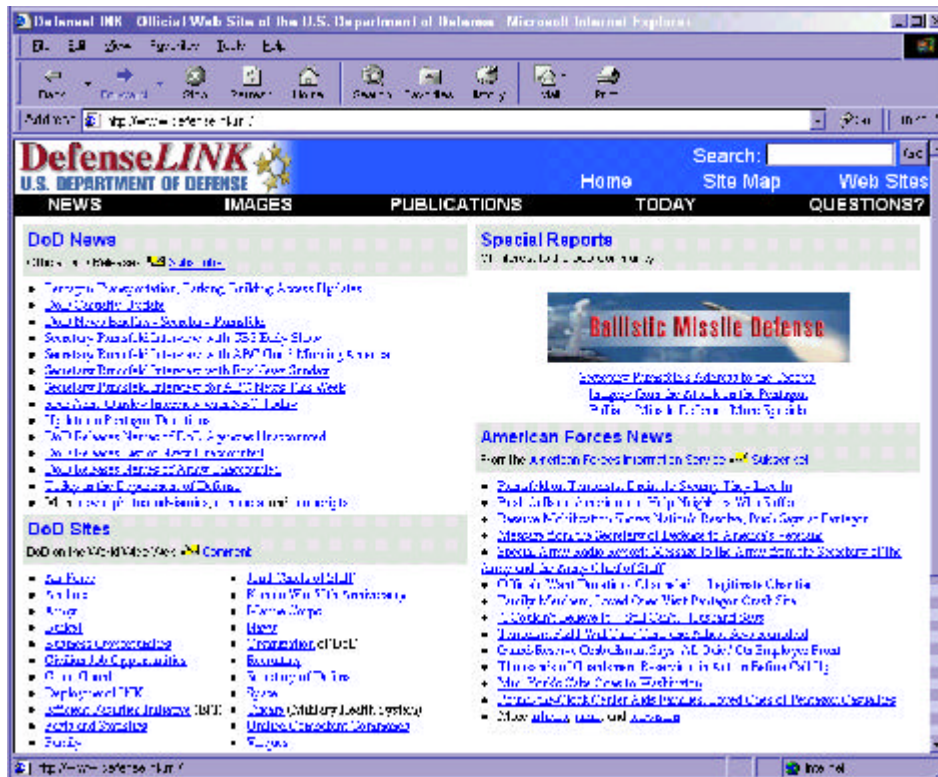
- ? Three main product lines make up the Sun ONE platform
 - Sun ONE Applications
 - Solaris Operating Environment
 - Development Tools
- ? These products work together to form the Sun ONE platform, and offer two very important features that sound similar but offer different benefits
 - Integrated – products used together
 - Integratable – open standards-based, interoperate with your existing systems now and new add-ons in the future

Sun ONE Platform





US Department of Defense



**Designed for
2.5 Million Users**

300 CPUs of Portal Server

Challenge...

**Concurrency aimed at
250,000 - 600,000 users**

**Ultimate HA and
Scalability!!**



http://www.sun.com/software/products/portal_srvr/home_portal.html

Per-Olof Litby
politby@sun.com

